
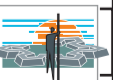
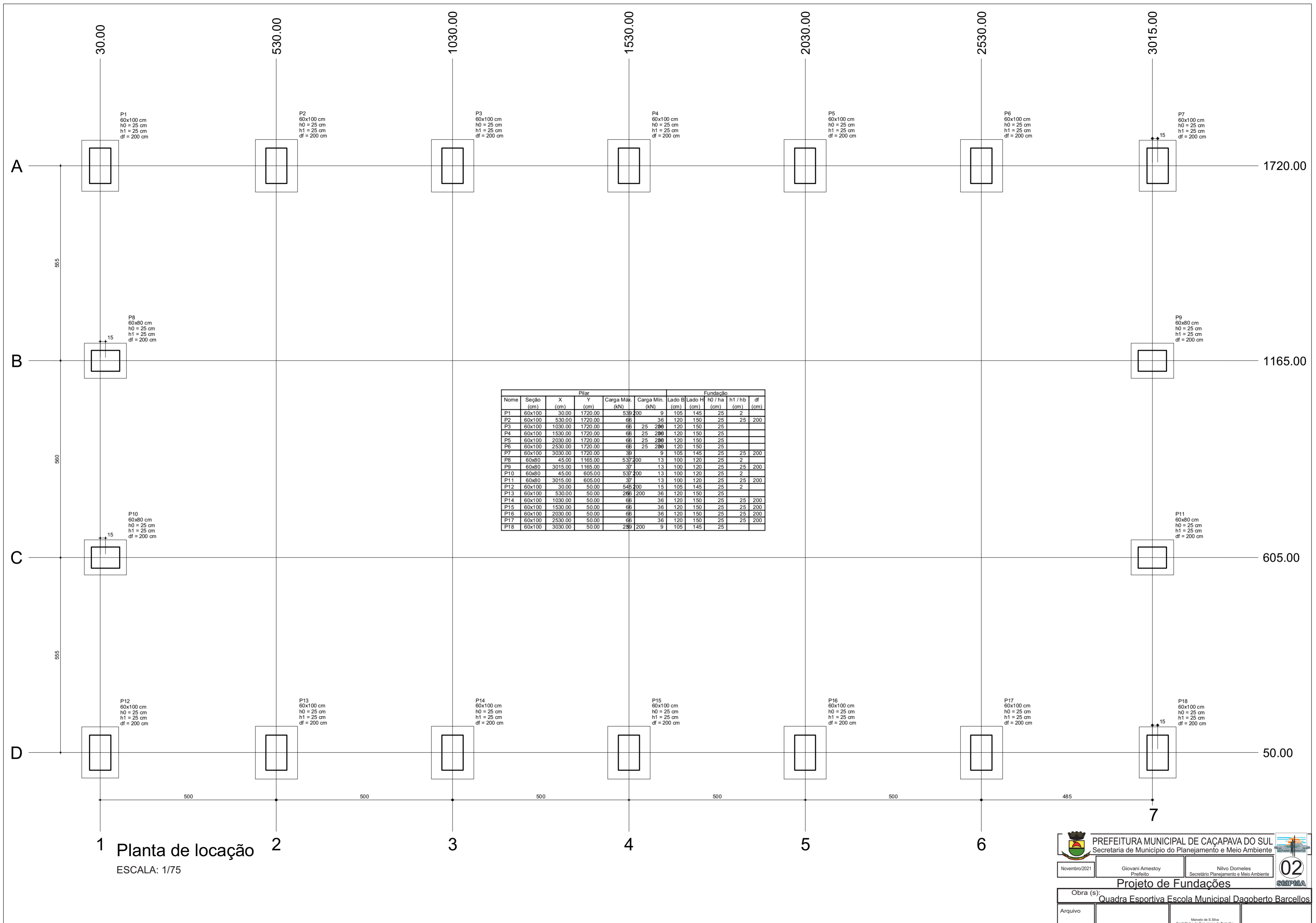


Forma do pavimento Baldrame (Nível 0)

ESCALA: 1/75

 <b>PREFEITURA MUNICIPAL DE CAÇAPAVA DO SUL</b> Secretaria de Município do Planejamento e Meio Ambiente		
Novembro/2021	Giovani Amestoy Prefeito	Nilvo Dorneles Secretário Planejamento e Meio Ambiente
<b>Projeto de Fundações</b>		
Obra (s): <b>Quadra Esportiva Escola Municipal Daçoberto Barcellos</b>		
Arquivo	Marcelo de S. Silva Eng. Civil e de Segurança do Trabalho	



Pilar				Fundação						
Nome	Seção (cm)	X (cm)	Y (cm)	Carga Máx. (kN)	Carga Min. (kN)	Lado B (cm)	Lado H (cm)	h0 / ha (cm)	h1 / hb (cm)	df (cm)
P1	60x100	30.00	1720.00	537	200	9	105	145	25	2
P2	60x100	530.00	1720.00	66	36	120	150	25	25	200
P3	60x100	1030.00	1720.00	66	25	290	120	150	25	
P4	60x100	1530.00	1720.00	66	25	290	120	150	25	
P5	60x100	2030.00	1720.00	66	25	290	120	150	25	
P6	60x100	2530.00	1720.00	66	25	290	120	150	25	
P7	60x100	3030.00	1720.00	39	9	105	145	25	25	200
P8	60x80	45.00	1165.00	537	200	13	100	120	25	2
P9	60x80	3015.00	1165.00	37	13	100	120	25	25	200
P10	60x80	45.00	605.00	537	200	13	100	120	25	2
P11	60x80	3015.00	605.00	37	13	100	120	25	25	200
P12	60x100	30.00	50.00	545	200	15	105	145	25	2
P13	60x100	530.00	50.00	266	200	36	120	150	25	
P14	60x100	1030.00	50.00	66	36	120	150	25	25	200
P15	60x100	1530.00	50.00	66	36	120	150	25	25	200
P16	60x100	2030.00	50.00	66	36	120	150	25	25	200
P17	60x100	2530.00	50.00	66	36	120	150	25	25	200
P18	60x100	3030.00	50.00	289	200	9	105	145	25	

1 Planta de locação  
ESCALA: 1/75


**PREFEITURA MUNICIPAL DE CAÇAPAVA DO SUL**  
 Secretaria de Município do Planejamento e Meio Ambiente

Novembro/2021

Giovani Amestoy  
 Prefeito

Nilvo Dorneles  
 Secretário Planejamento e Meio Ambiente

**Projeto de Fundações**

Obra (s): **Quadra Esportiva Escola Municipal Daçoberto Barcellos**

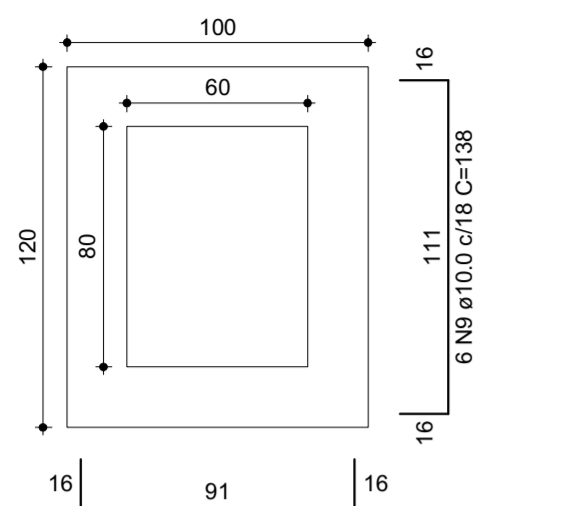
Arquivo

Marcelo de S. Silva  
 Eng. Civil e de Segurança do Trabalho



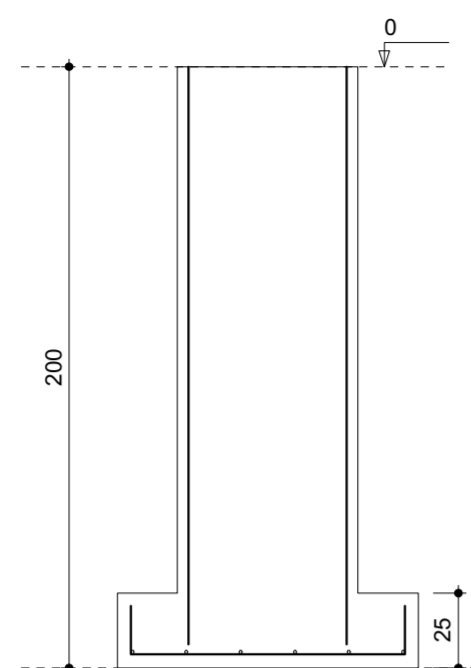
S8=S9=S10=S11

PLANTA  
ESC 1:25



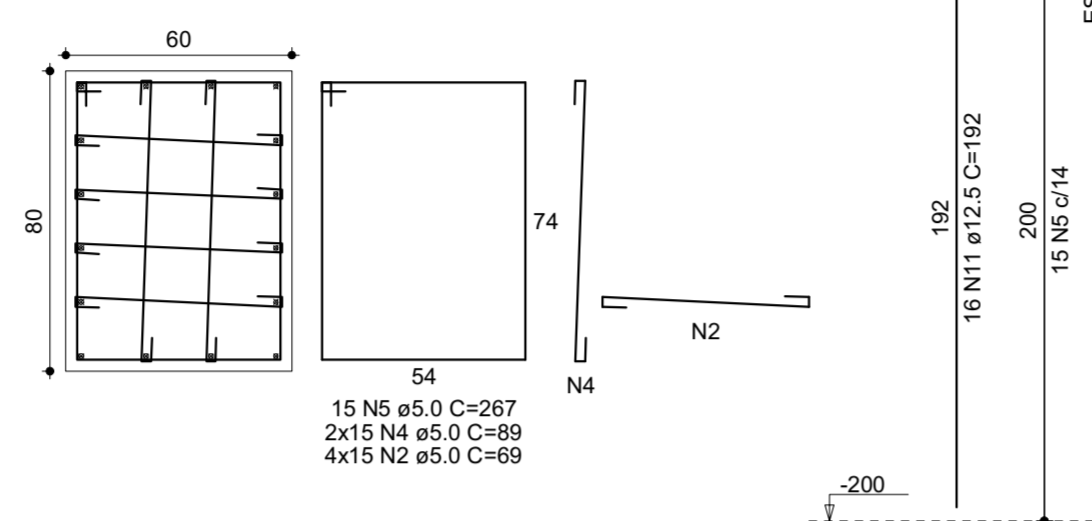
Solo com capacidade de suporte > 150.00 kN/m<sup>2</sup>

CORTE  
ESC 1:25



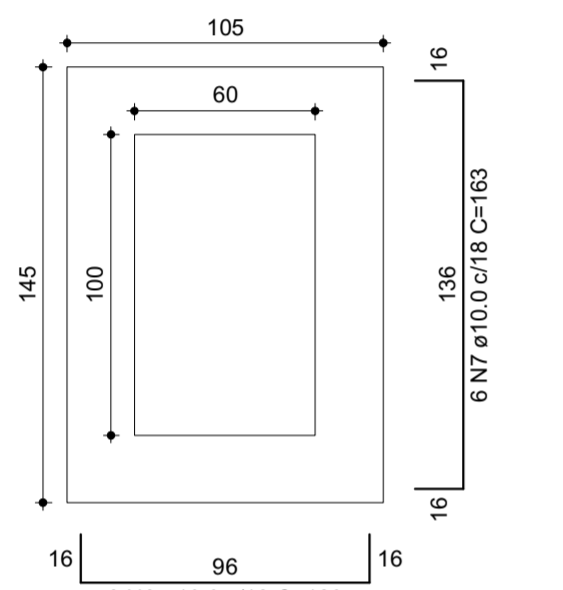
P8=P9=P10=P11

BALDRAME - L1  
SEÇÃO  
ESC 1:20



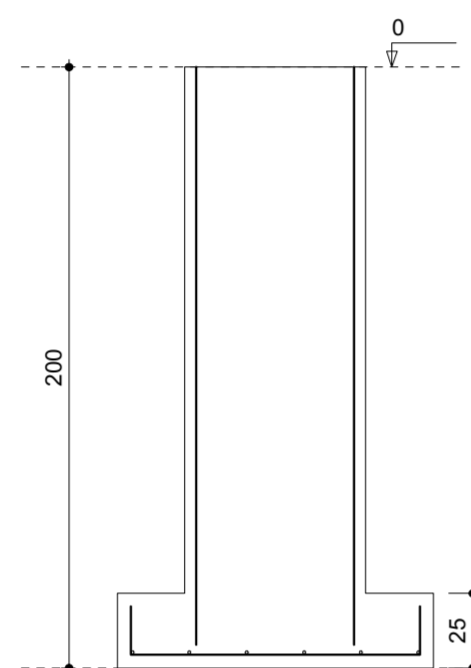
S1=S7=S12=S18

PLANTA  
ESC 1:25



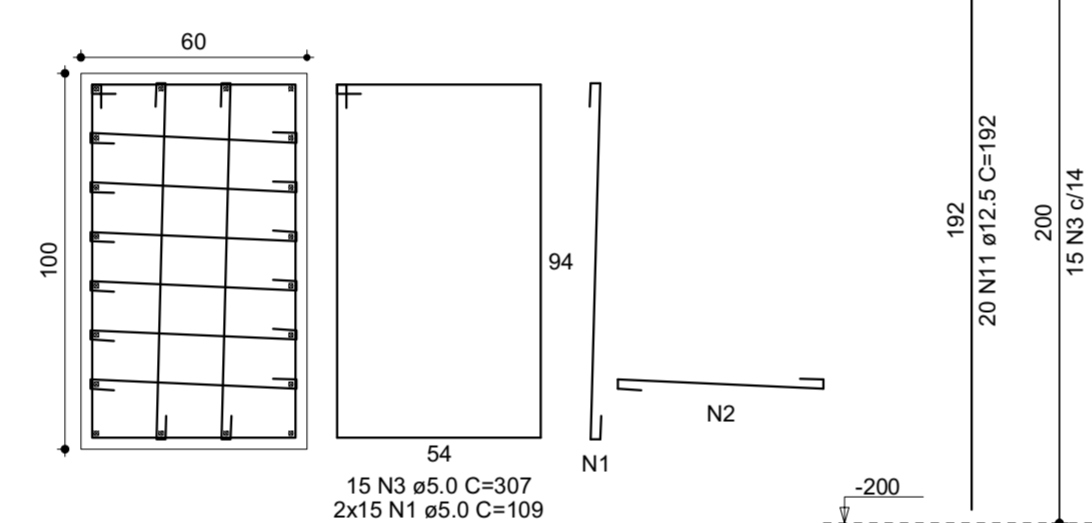
Solo com capacidade de suporte > 150.00 kN/m<sup>2</sup>

CORTE  
ESC 1:25



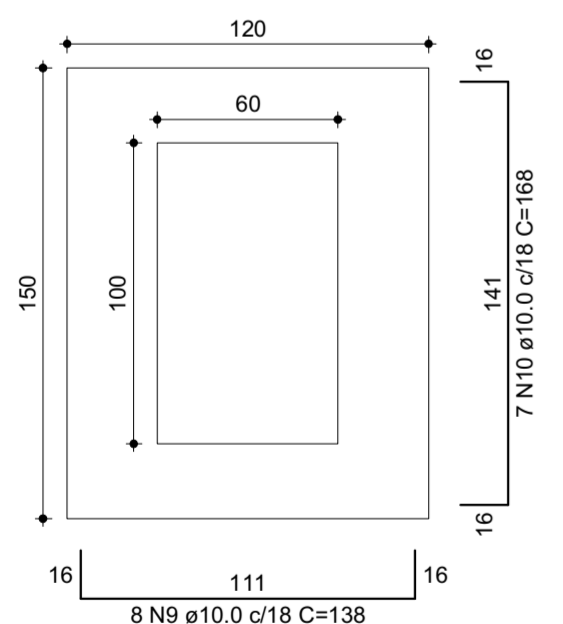
P1=P7=P12=P18

BALDRAME - L1  
SEÇÃO  
ESC 1:20



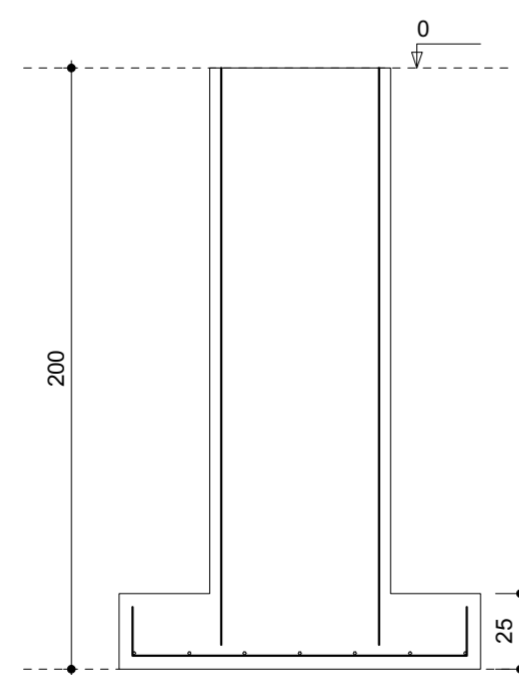
S2=S3=S4=S5=S6=S13=S14=S15=S16=S17

PLANTA  
ESC 1:25



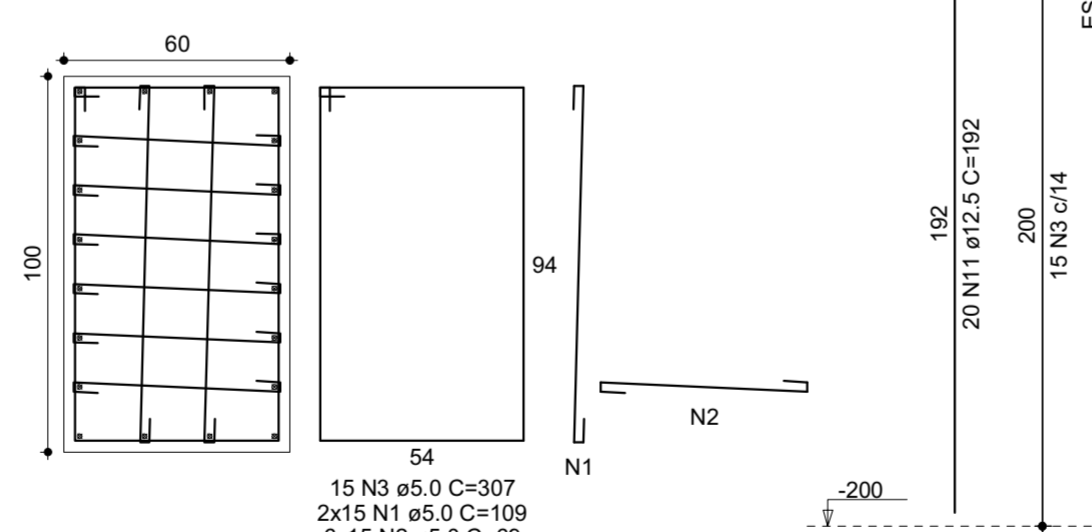
Solo com capacidade de suporte > 150.00 kN/m<sup>2</sup>

CORTE  
ESC 1:25



P2=P3=P4=P5=P6=P13=P14=P15=P16=P17

BALDRAME - L1  
SEÇÃO  
ESC 1:20



## RESUMO DO AÇO

AÇO	DIAM (mm)	C.TOTAL (m)	PESO + 10% (kg)
CA50	10.0	372.6	252.7
CA60	12.5	660.5	699.9
CA60	5.0	2404.5	407.7
<b>PESO TOTAL (kg)</b>			
CA50	952.6		
CA60	407.7		

Volume de concreto (C-30) = 27.86 m<sup>3</sup>

Área de forma = 134.90 m<sup>2</sup>