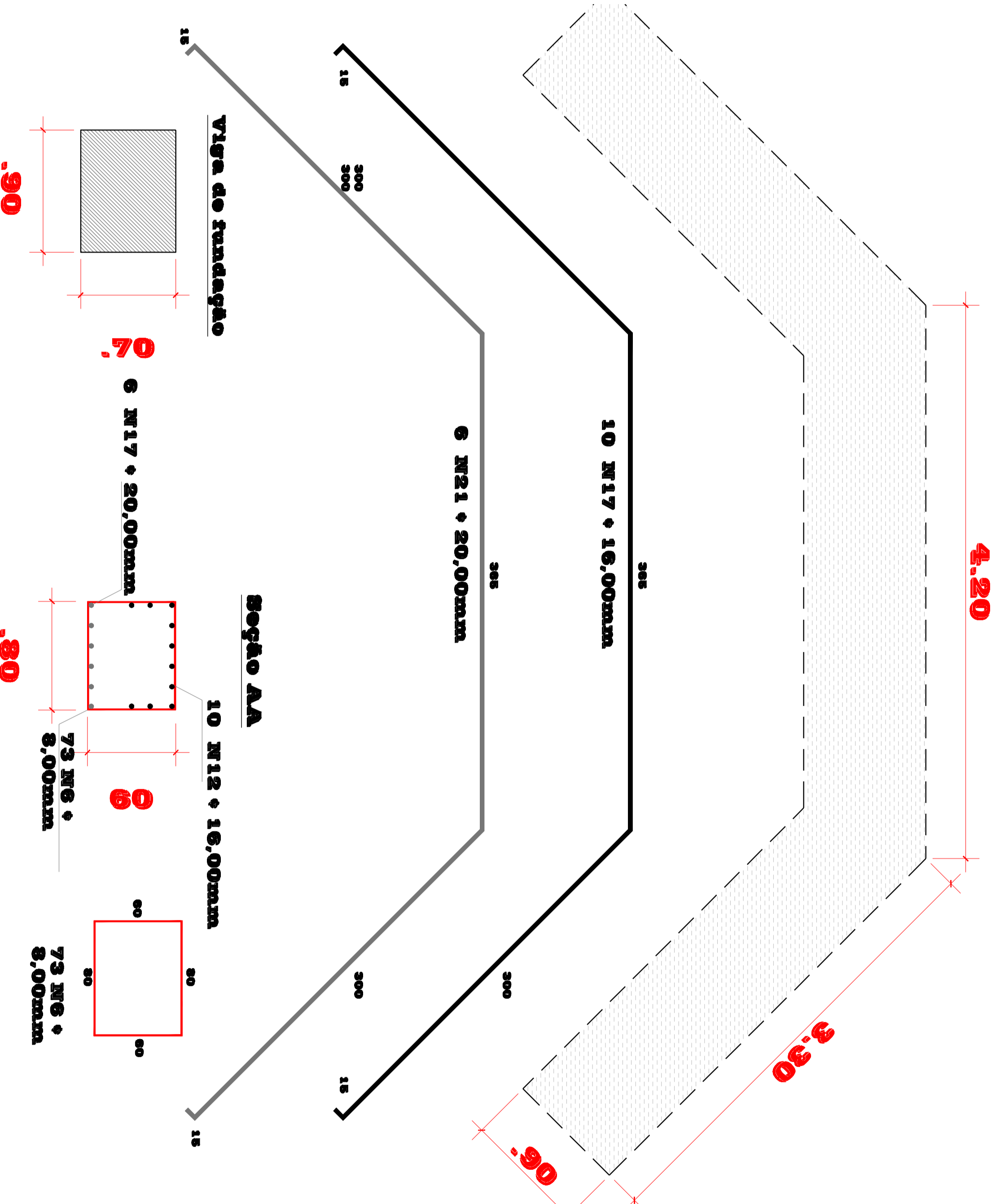
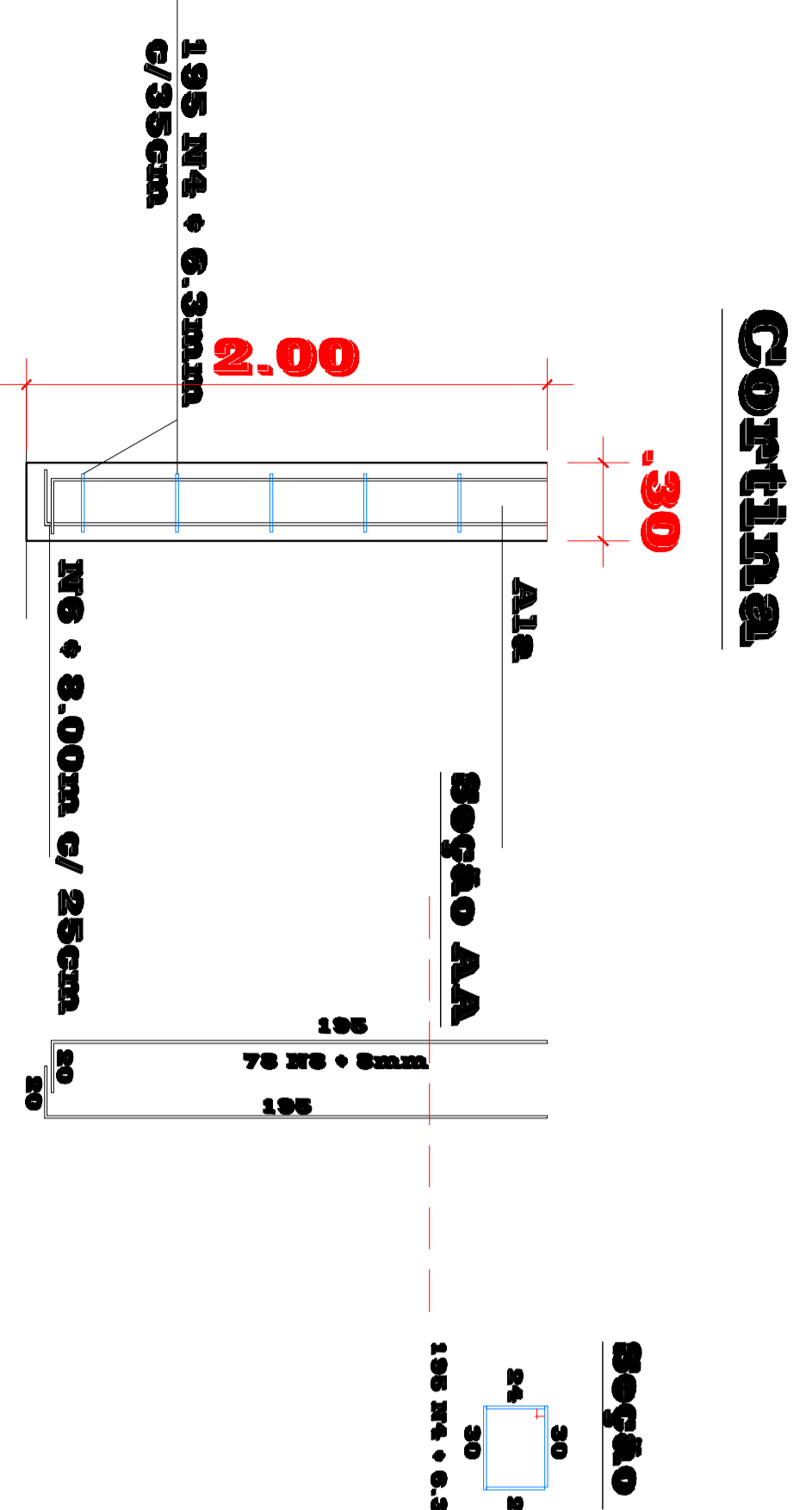
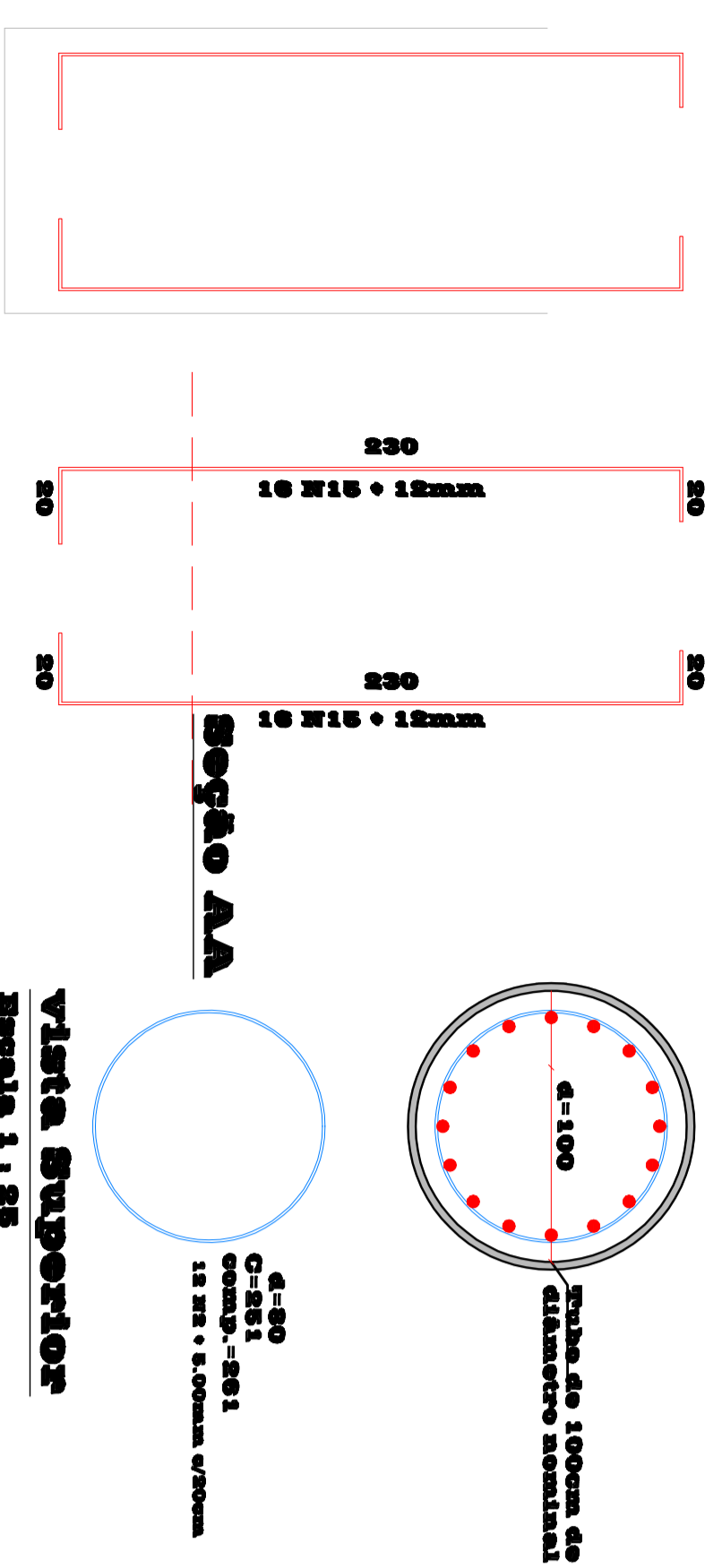
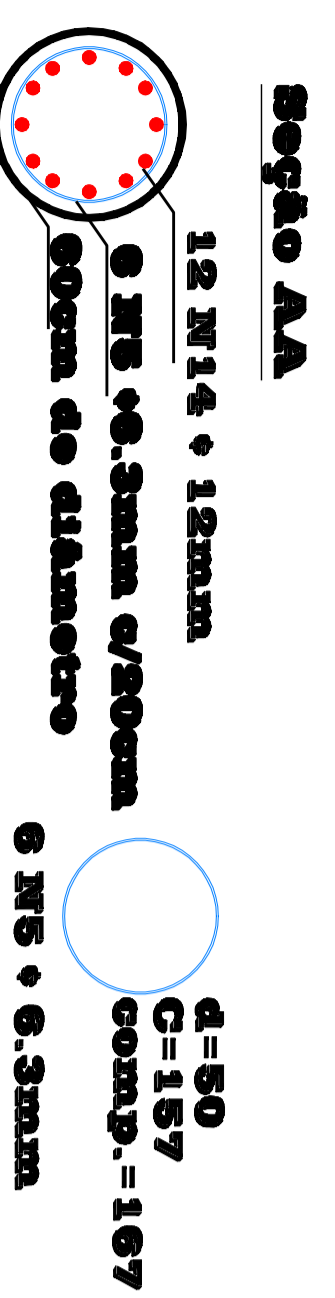
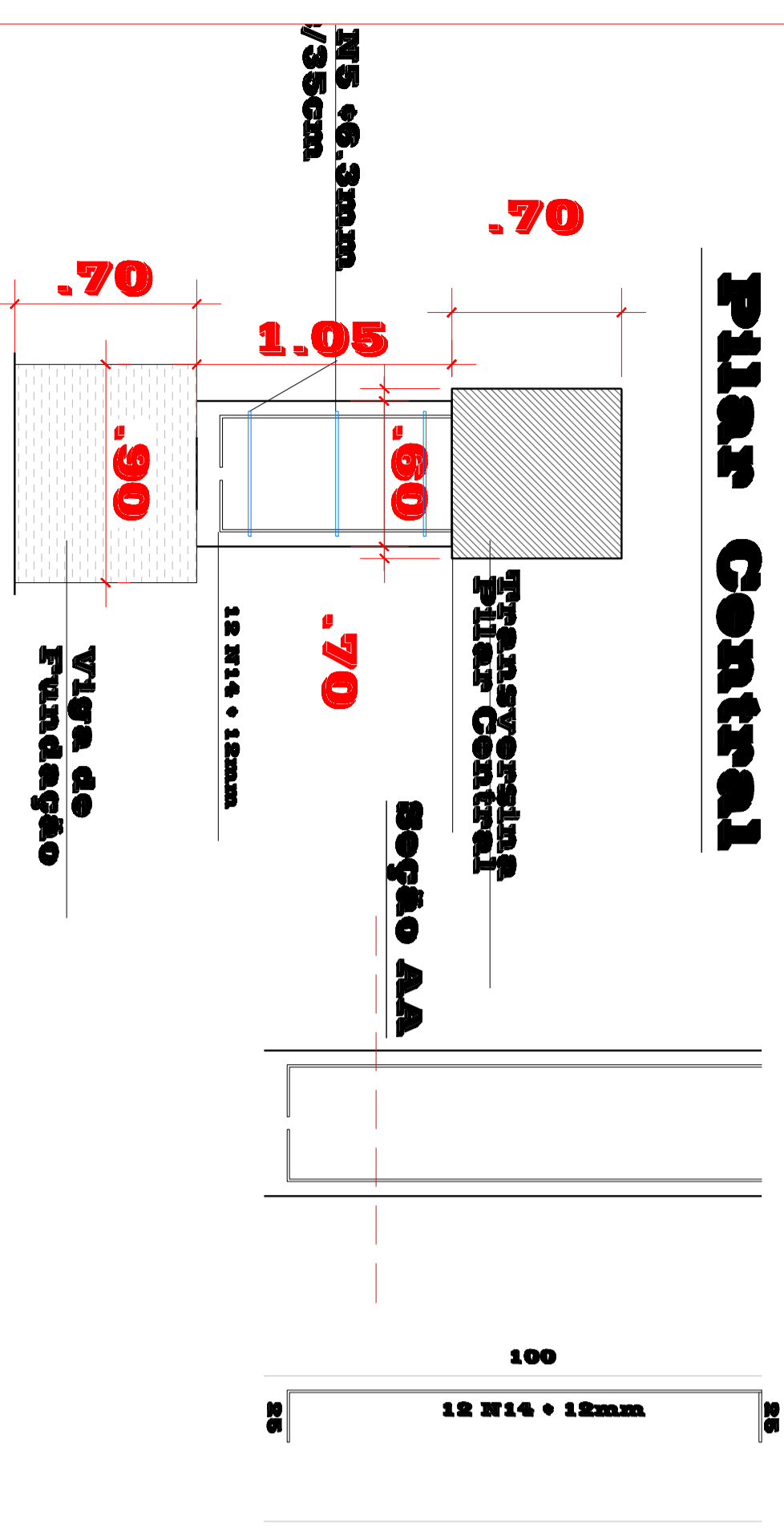


# Ponte Passo dos Galvãlhos

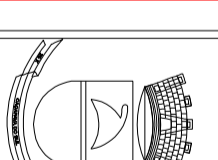
## Viga de Fundação



## Pilar Central



Aço	N	Diam.	Quant.	Unid.(Cm)	Comp. Total
CA 50	1	5.0	1000	204	204000
	2	5.0	120	261	3320
	3	6.3	2000	100	408000
	4	6.3	390	118	73632
	5	6.3	6	167	1002
	6	6.3	177	290	51330
	7	8.0	31	250	7750
	8	8.0	156	215	49920
	9	8.0	16	700	11200
	10	8.0	16	750	12000
	11	8.0	16	950	15200
	12	8.0	16	1000	16000
	13	8.0	16	1245	19920
	14	12.0	24	150	3600
	15	12.0	160	270	43200
	16	12.0	120	300	49200
	17	16.0	20	995	19900
	18	16.0	10	470	4700
	19	16.0	20	470	9400
	20	20.0	12	470	9400
	21	20.0	12	995	11940
	22	25.0	16	1245	19920
	23	25.0	16	1250	20000
	24	25.0	16	1385	22160



PREFEITURA MUNICIPAL DE CAÇAPAVA DO SUL  
PROGRAMA RESPOSTA AOS DESASTRES  
MINISTÉRIO DA INTEGRAÇÃO NACIONAL  
PONTE EM CONCRETO ARMADO



LOCAL: ZAIKI TRABALHO RESERVA DE CASTRO  
MUNICÍPIO: CAÇAPAVA DO SUL / MS  
PROJETO: CLAUDIO GOELLNER  
DATA: maio 2010  
CIVIL/MS 38000