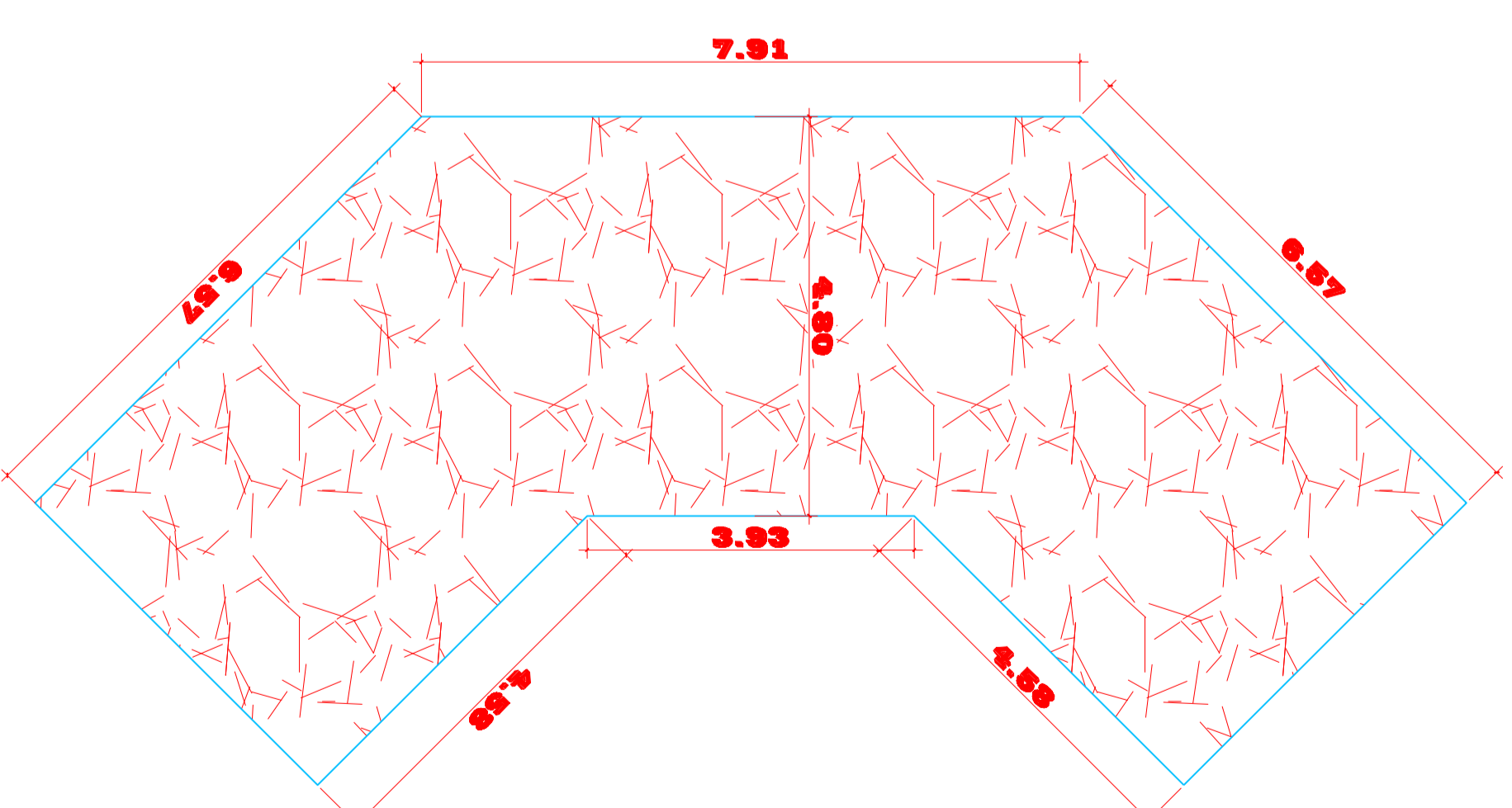
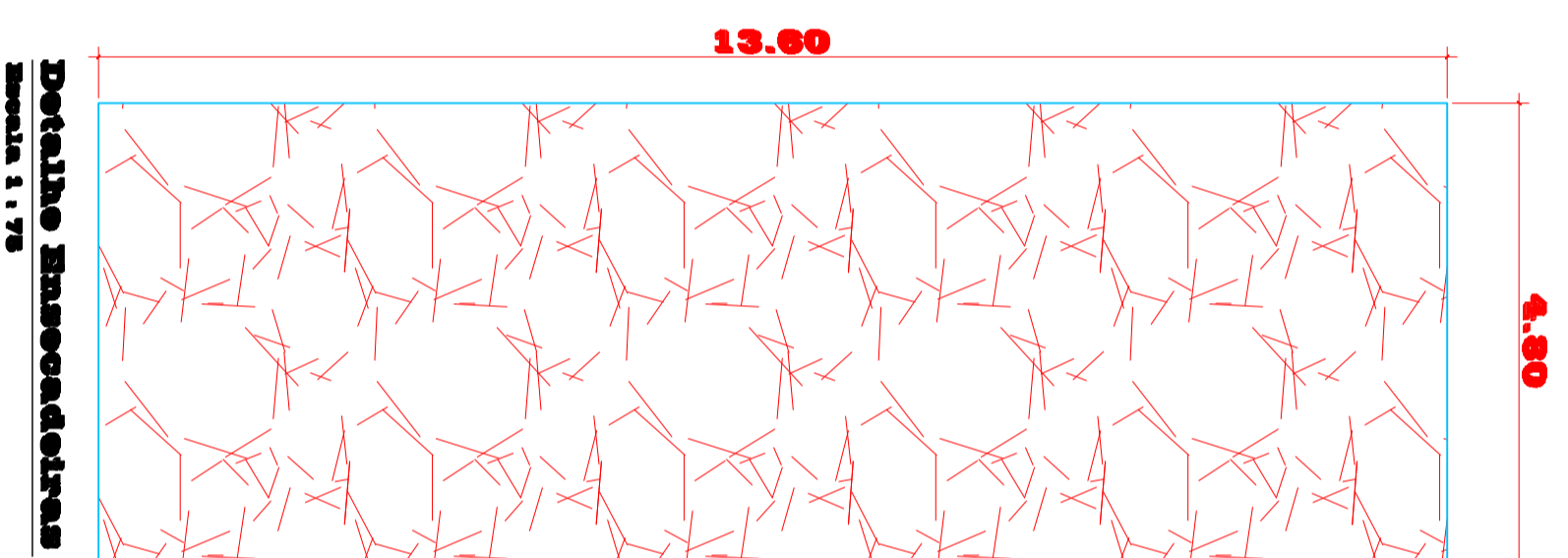
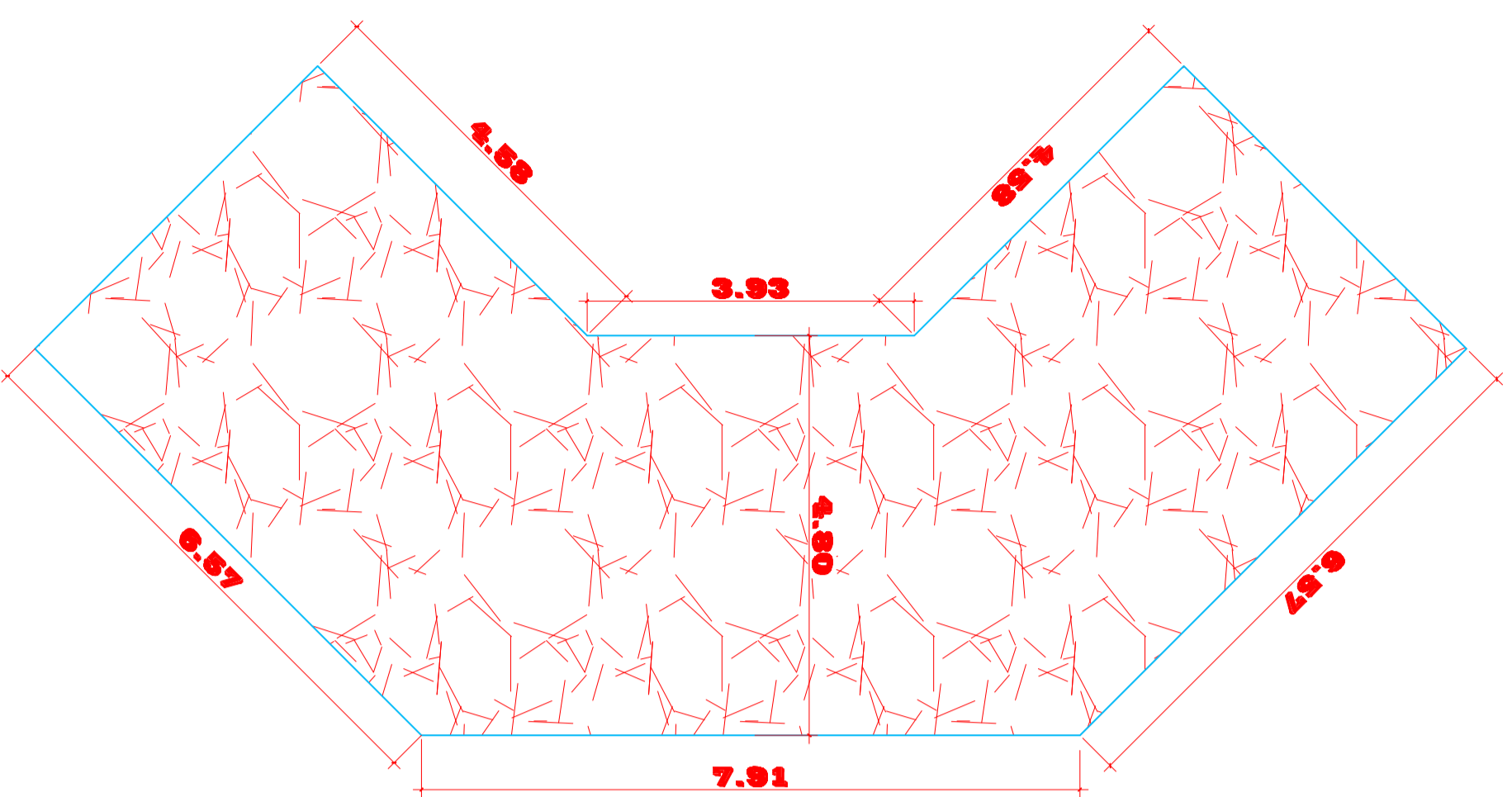
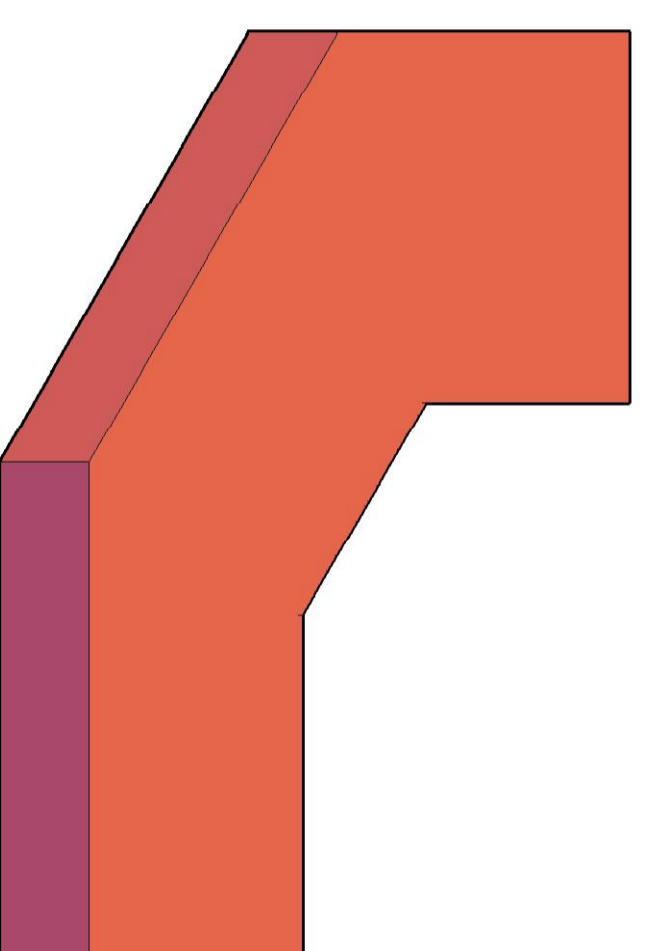
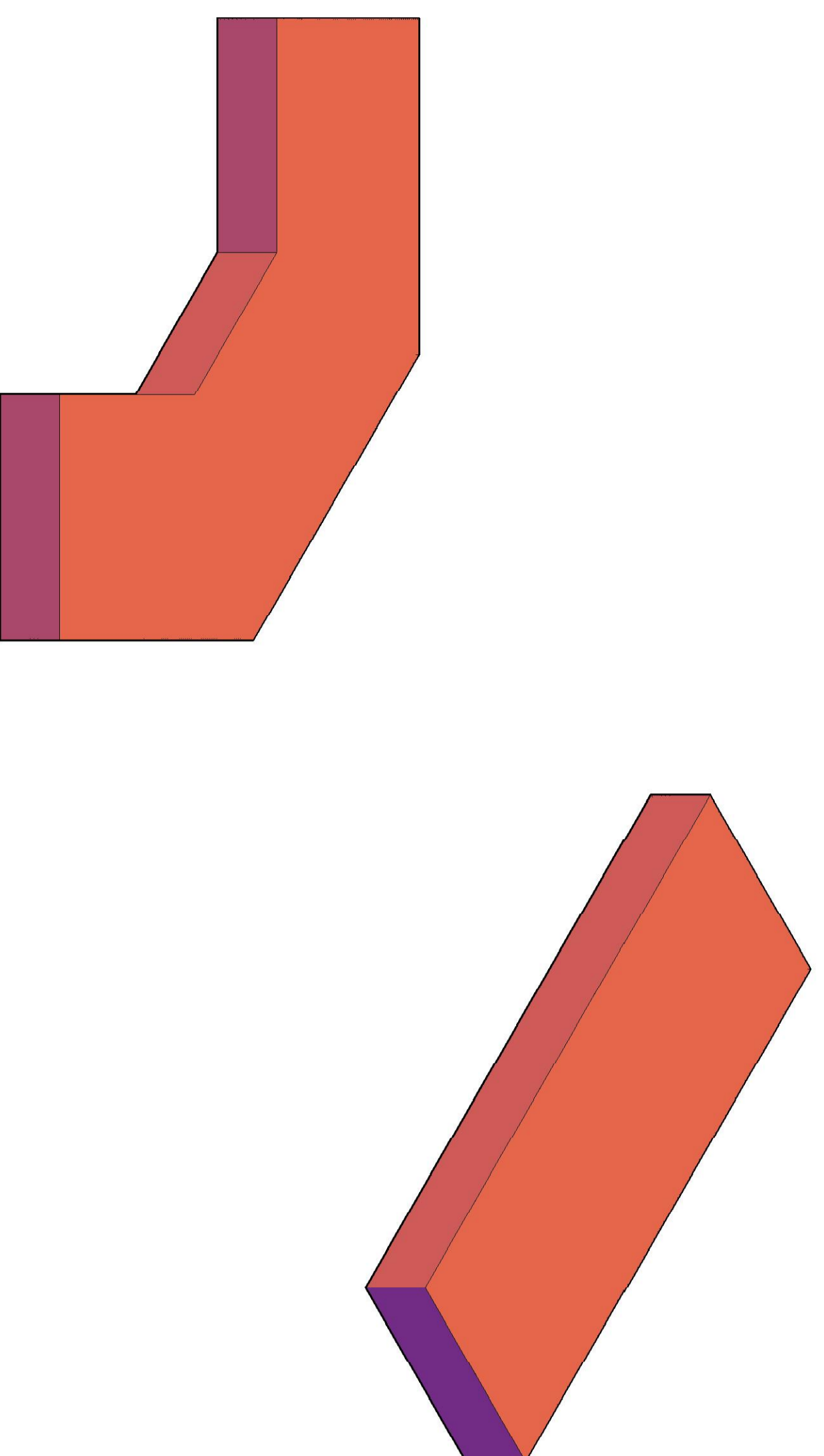


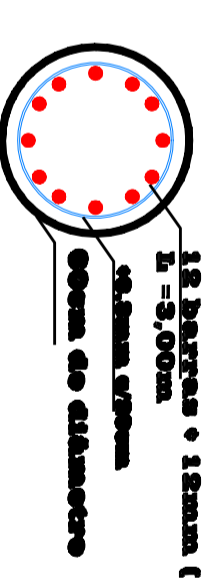
Ponte Passo dos Carvalhos



Ensacada de Iras-Isométrica

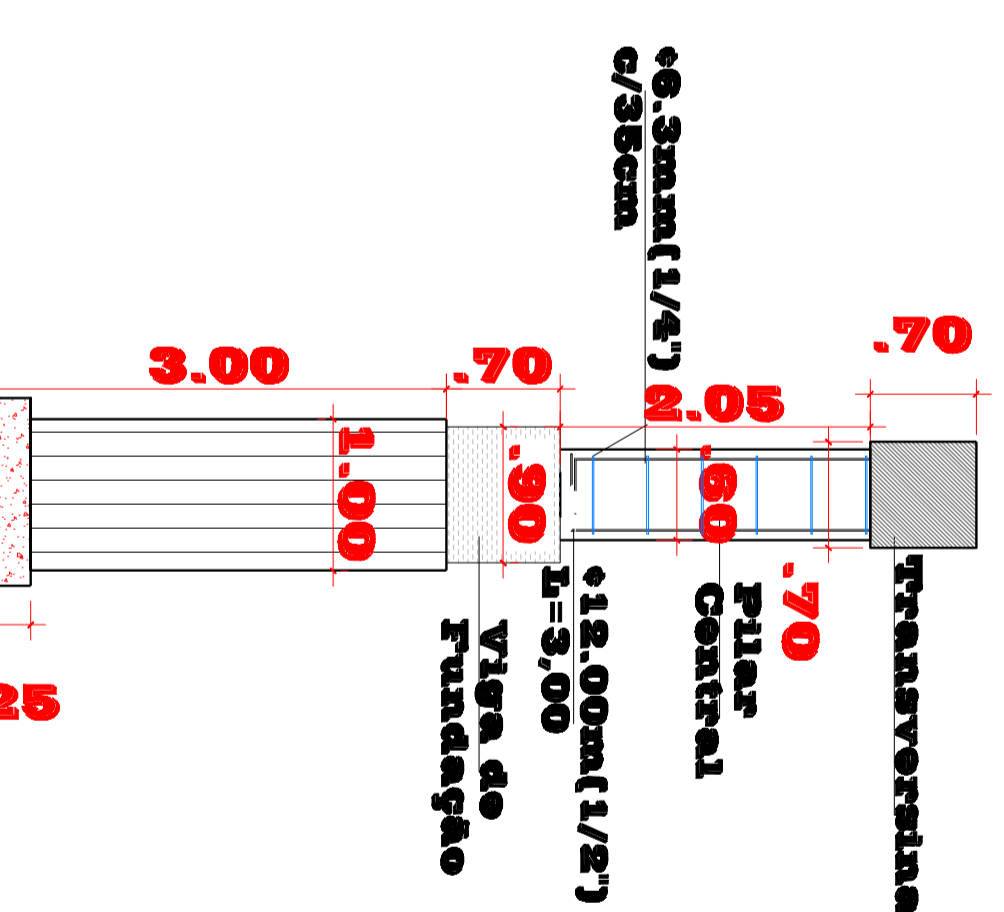


Detalhe Ferragem Pilar Central



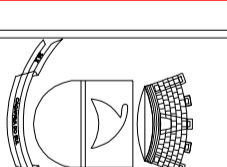
Vista Superior

Escola 1 : 25



Detalhe Pilar Central

Escola 1 : 50



PREFEITURA MUNICIPAL DE CAÇAPAVA DO SUL

PROGRAMA RESPOSTA AOS DESASTRES
MINISTÉRIO DA INTEGRAÇÃO NACIONAL

PONTE EM CONCRETO ARMADO

PRAMA MATZA - CONSTR. SA. S ME
FABIO DOS SANTOS - CAÇAPAVA DO SUL / MS



DATA: maio 2010
LOCAL: ZULNI TABALU RESERVA DE CASTRO
PROJETO: CLAUDIO GOELLNER
CRA/MS 38000-0