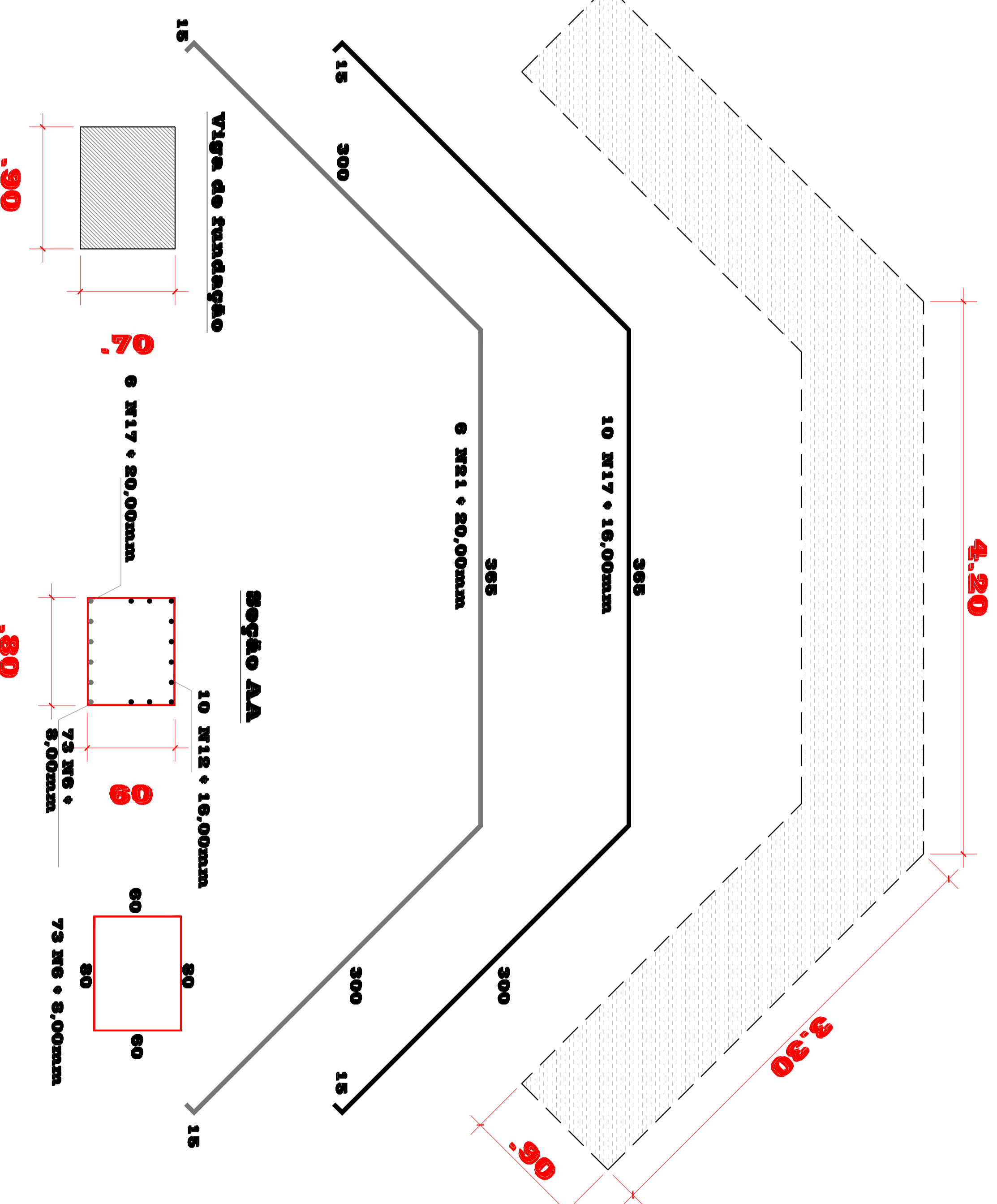
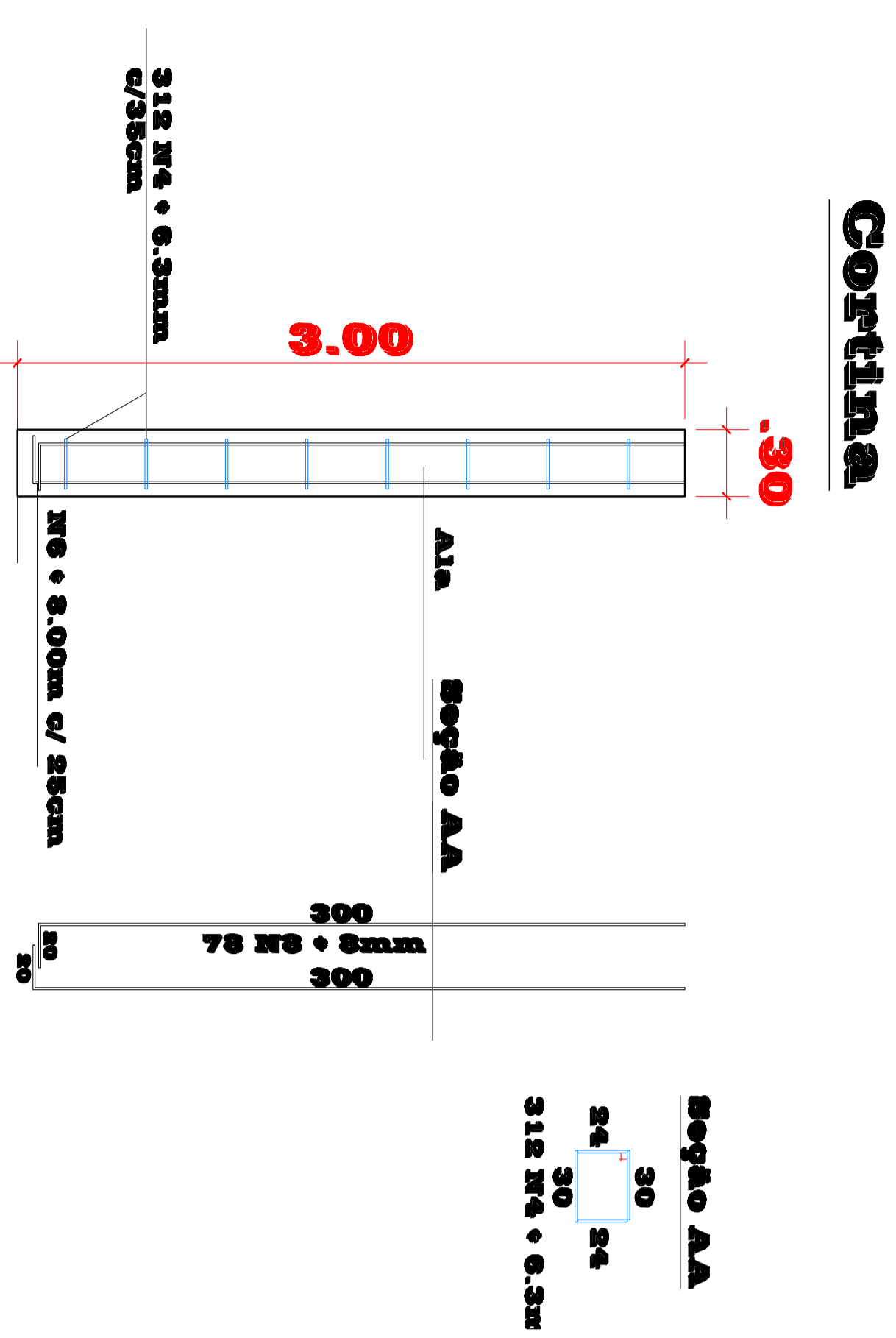
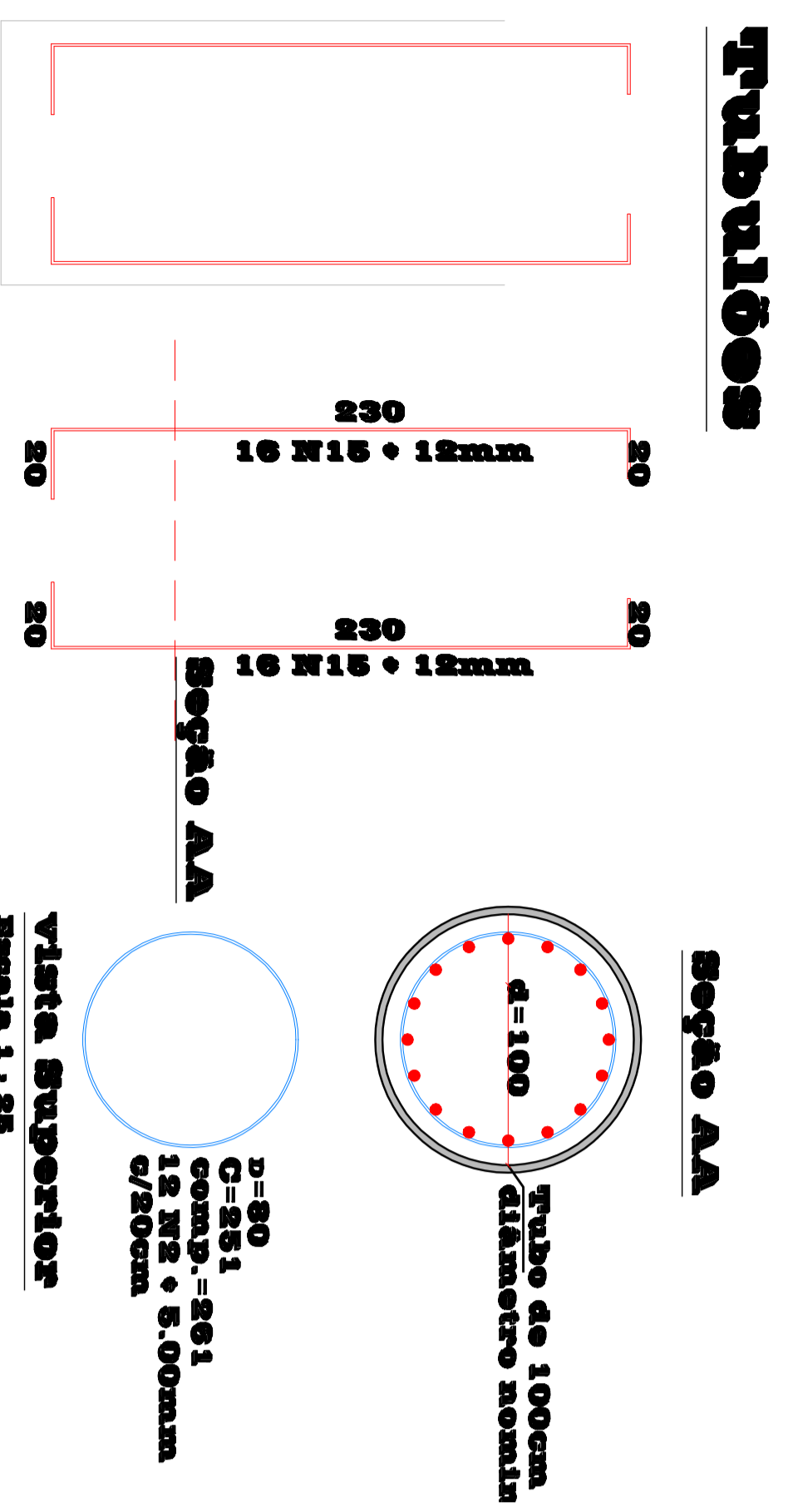
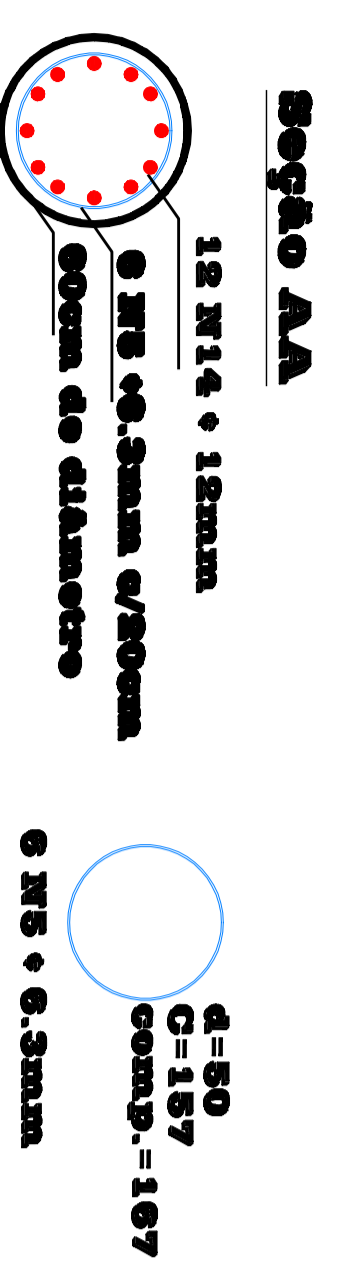
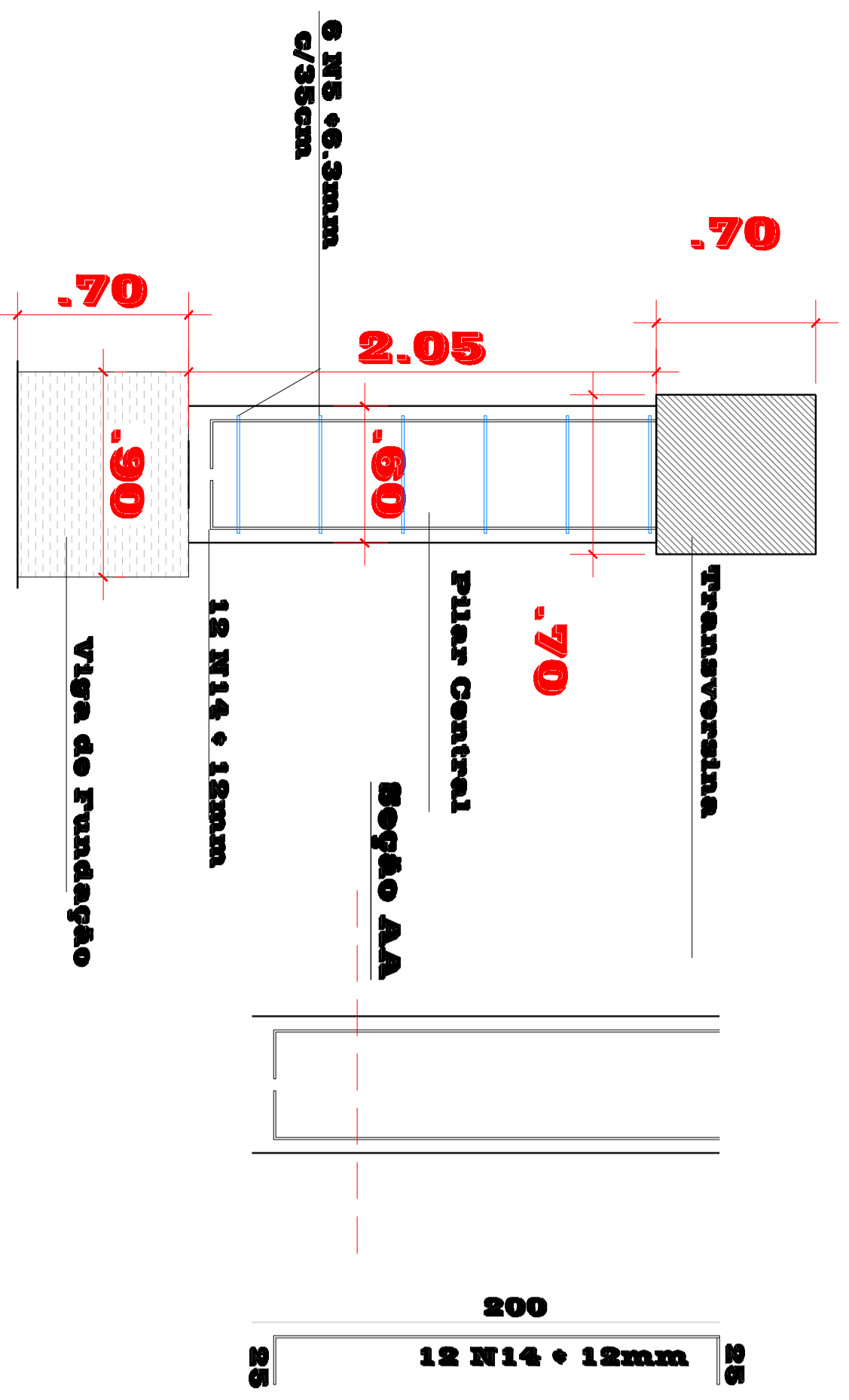


Ponte Passo dos Carvalhos

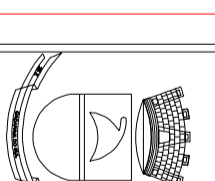
Viga de Fundação



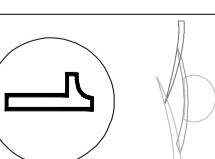
Pilar Central



Aço	N	Diam.	Quant.	Unit.(Cm)	Comp. Total
CA 50	1	5.0	1000	204	204000
	2	5.0	120	261	33320
	3	6.3	2000	100	408000
	4	6.3	624	118	73632
	5	6.3	12	167	2004
	6	6.3	177	230	51330
	7	8.0	31	250	7750
	8	8.0	156	320	49920
	9	8.0	16	700	11200
	10	8.0	16	750	12000
	11	8.0	16	950	15200
	12	8.0	16	1000	16000
	13	8.0	16	1245	19920
	14	12.0	24	250	6000
	15	12.0	160	270	43200
	16	12.0	120	300	43920
	17	16.0	20	995	19900
	18	16.0	10	470	4700
	19	16.0	20	470	9400
	20	20.0	12	470	9400
	21	20.0	12	935	11940
	22	25.0	16	1245	19920
	23	25.0	16	1250	20000
	24	25.0	16	1385	22160
					204000
					33320
					408000
					73632
					2004
					51330
					7750
					49920
					11200
					12000
					15200
					16000
					19920
					6000
					43200
					43920
					19900
					4700
					9400
					9400
					11940
					19920
					20000
					22160



PREFEITURA MUNICIPAL DE CAÇAPAVA DO SUL
PROGRAMA RESPOSTA AOS DESASTRES
MINISTÉRIO DA INTEGRAÇÃO NACIONAL
PONTE EM CONCRETO ARMADO



LOCAL: PALMIRA BATZA - CORREIA AA e BB
PARO DO CARVALHOS - CAÇAPAVA DO SUL / RS
DATA: maio 2010
AUTOR: ZAIRI TANAU FERREIRA DE CASTRO
PROJETO: CLAUDIO GOELLER
INGENHEIRO CIVIL
CRM/RS 28900-0