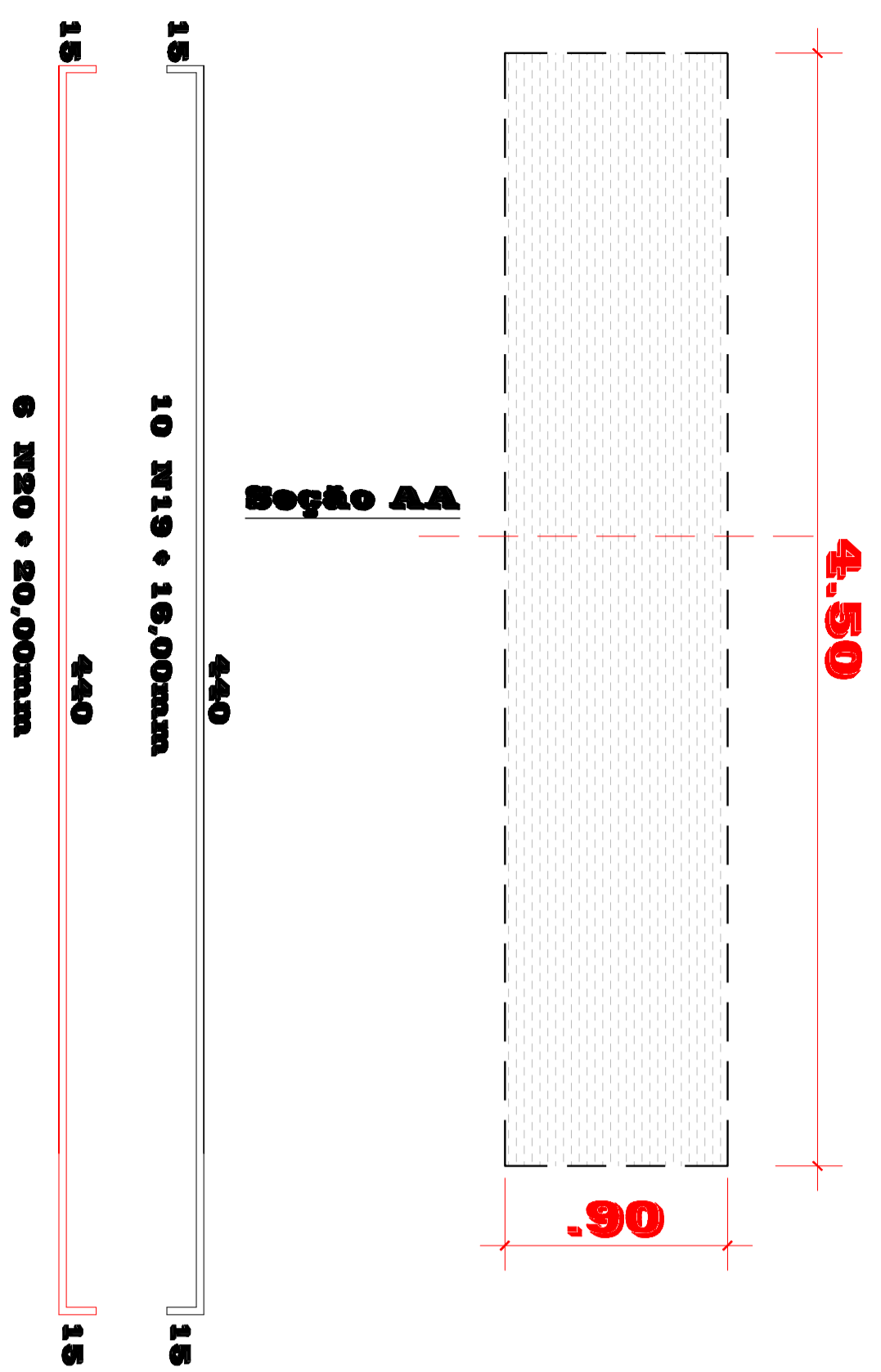
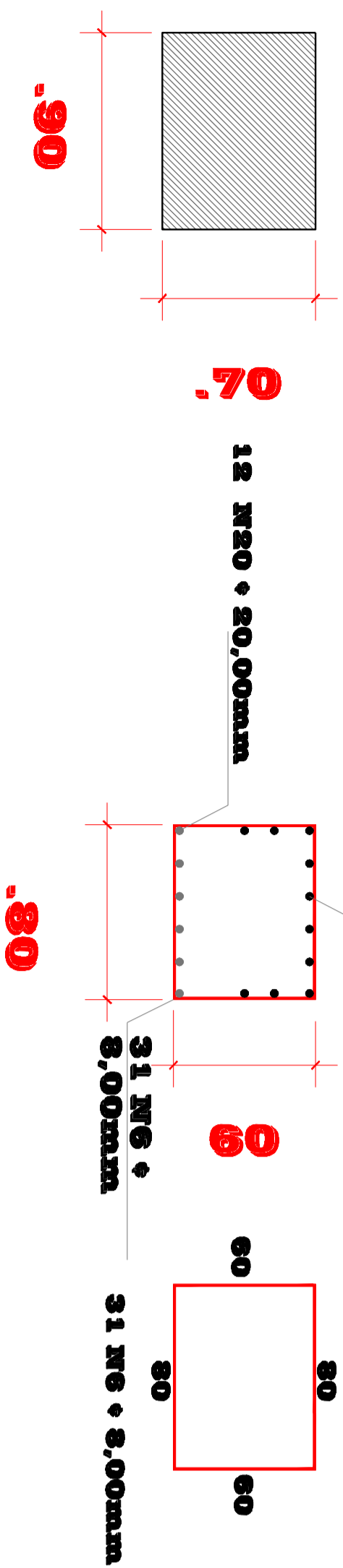


Ponte Passo dos Cavalhos

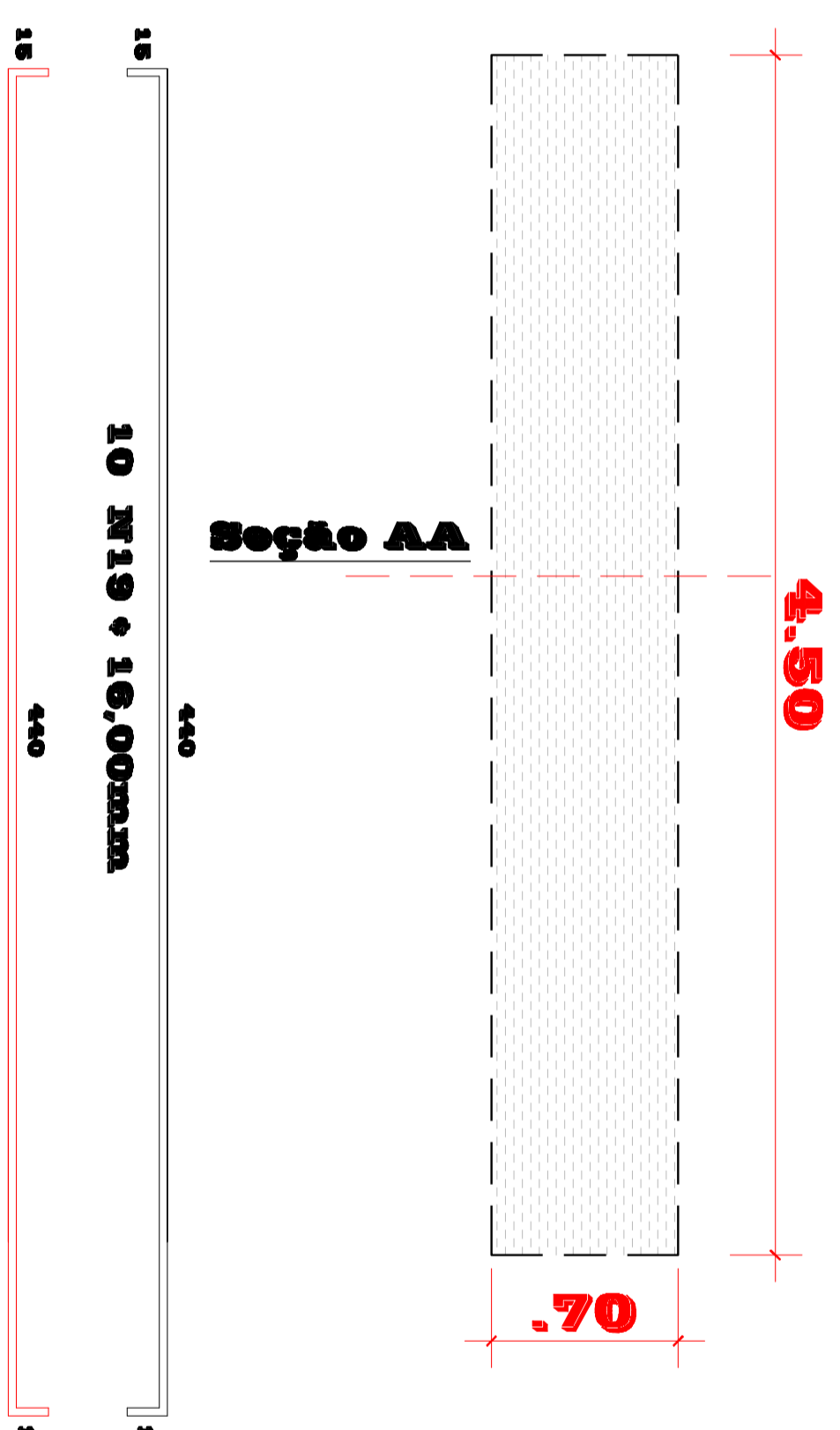
Viga de Fundação



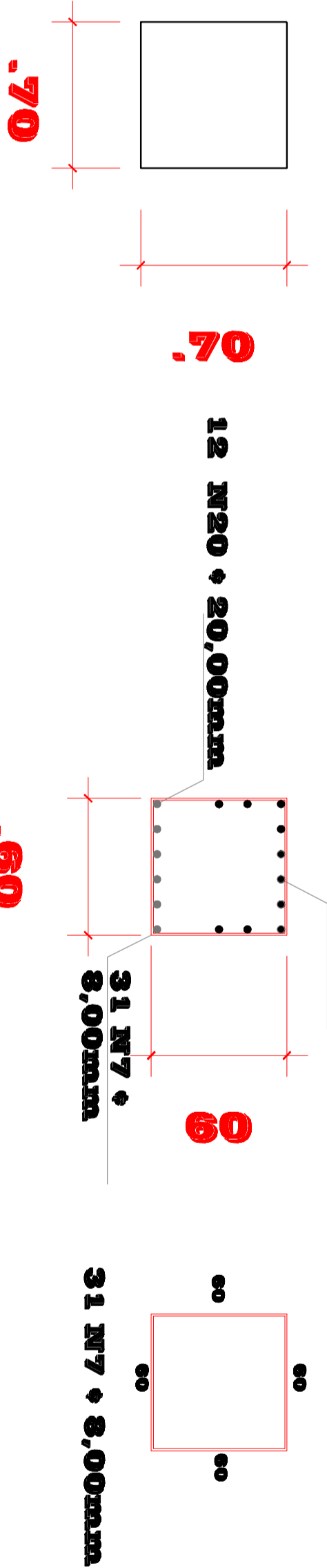
Viga de fundação



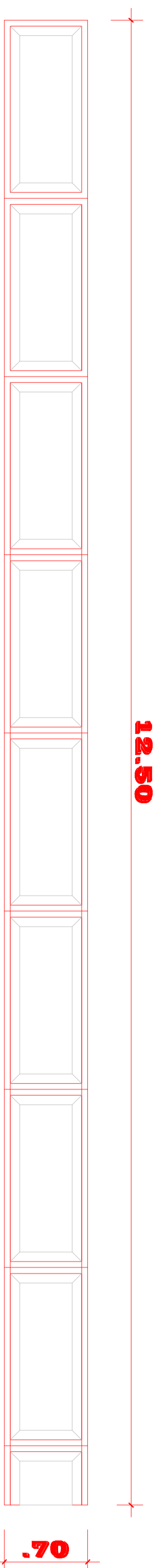
Transversina



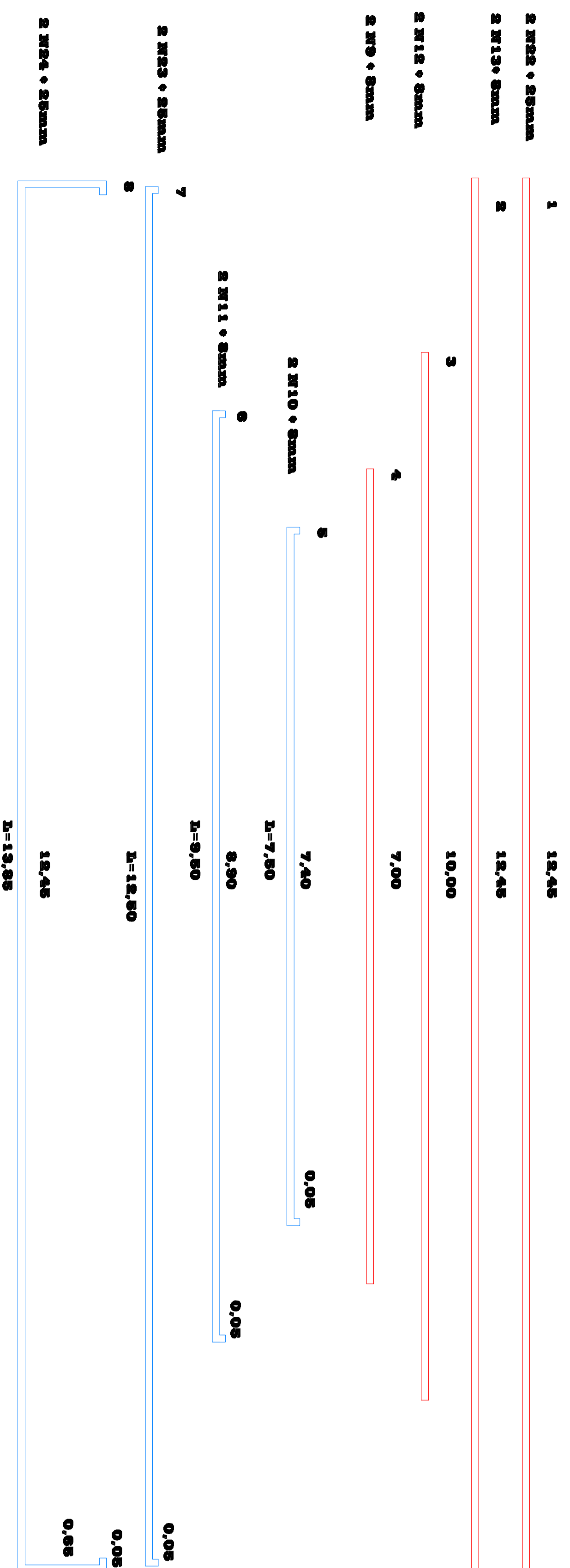
Seção AA



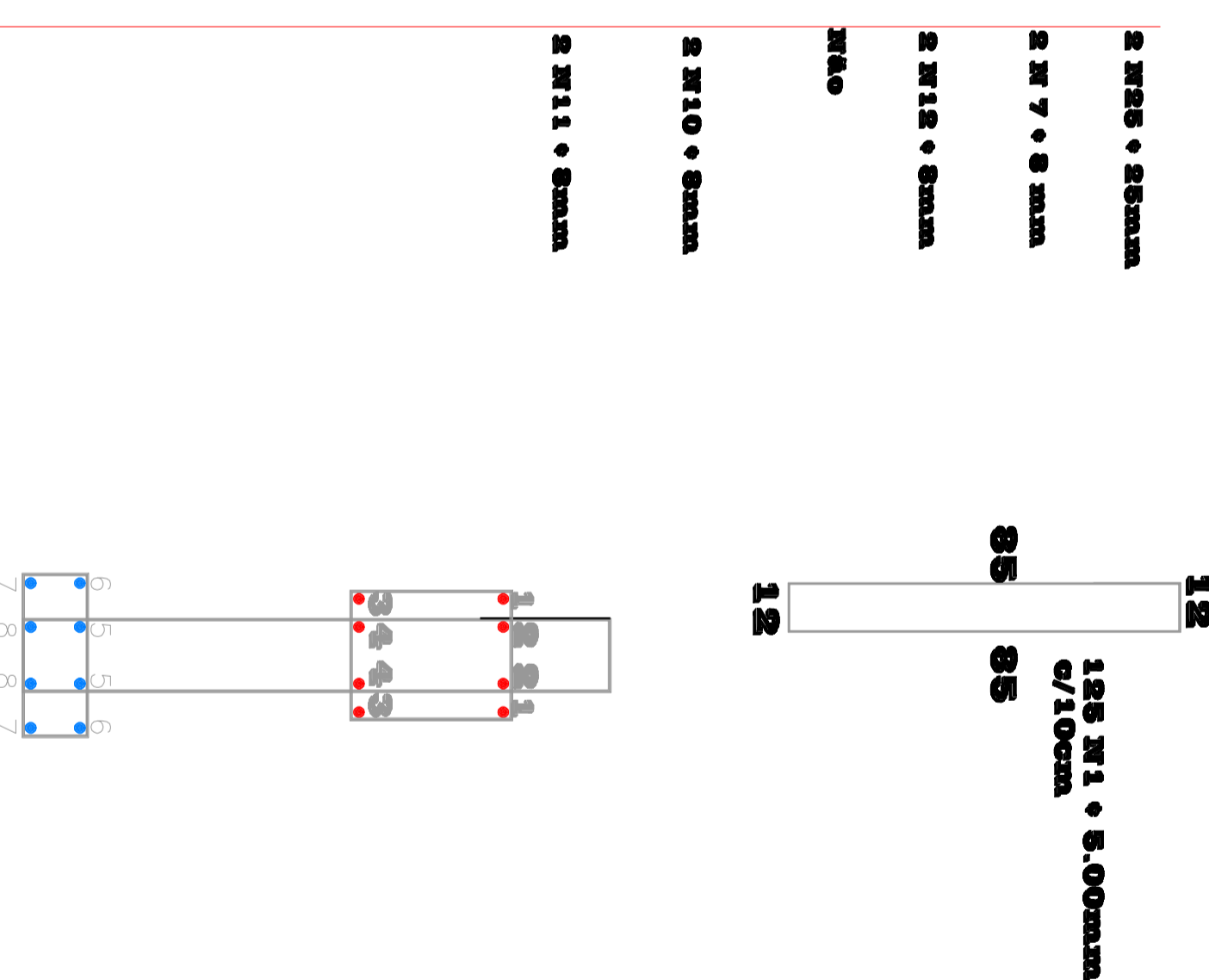
Longarina 25x 70x1250



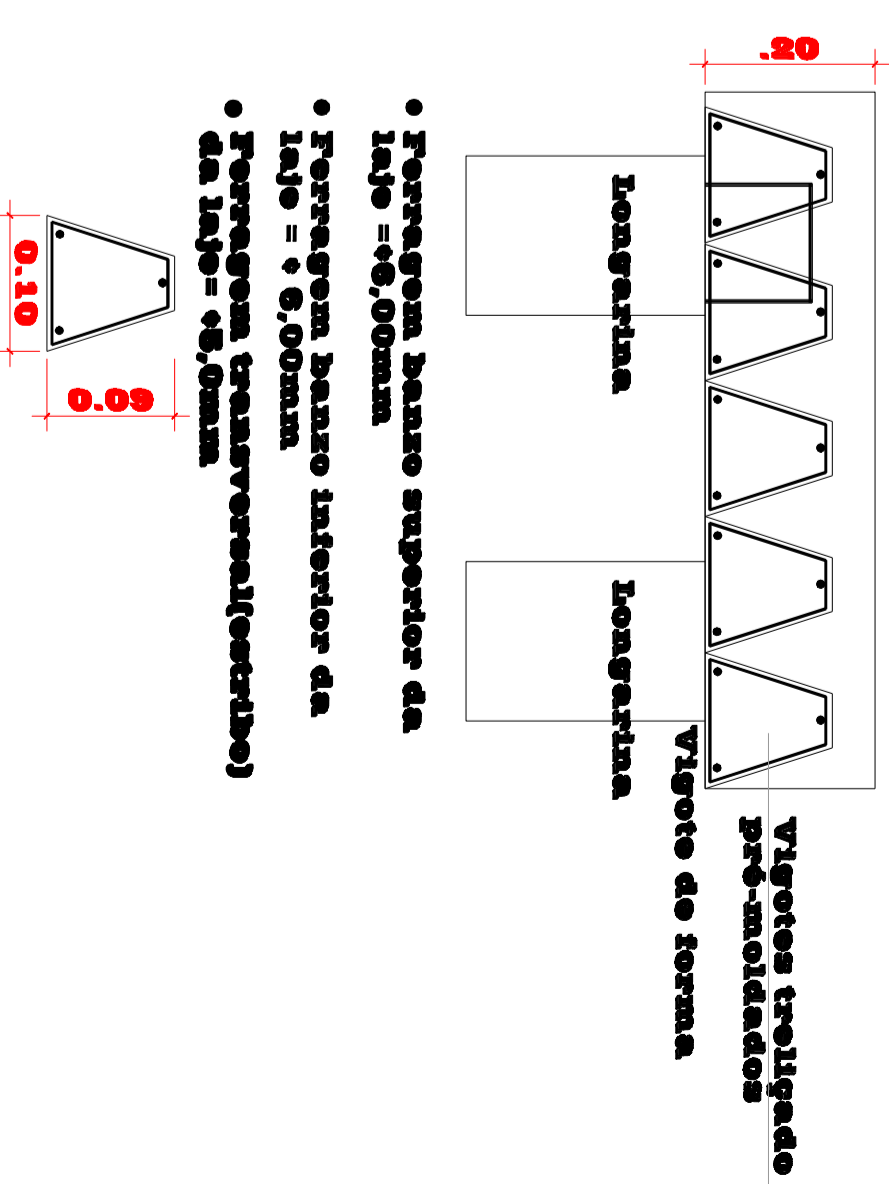
Interna



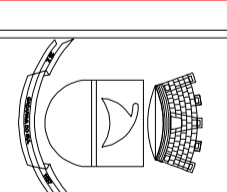
Externa



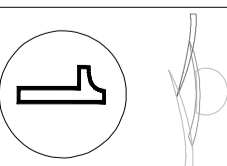
Corte longitudinal Detalhe Fusteiro / Escala



As longarinas são calculadas como vigas bi-apoiadas. As longarinas são apoiadas nas cortinas das cabeceiras que também atuam na contenção dos alicerces de acesso a ponte.



PREFEITURA MUNICIPAL DE CAÇAPAVA DO SUL
PROGRAMA RESPOSTA AOS DESASTRES
MINISTÉRIO DA INTEGRAÇÃO NACIONAL
PONTE EM CONCRETO ARMADO



LOCAL: PÁRQUE BATIZ - CORREIA AA O 25
DATA: MARÇO 2010
PROJETO: CLAUDIO GOELLNER
INGENHEIRO CIVIL
CRM/RS 38900-0
ZAVATI TIANAYU FERREIRA DE CASTRO
PROJETA