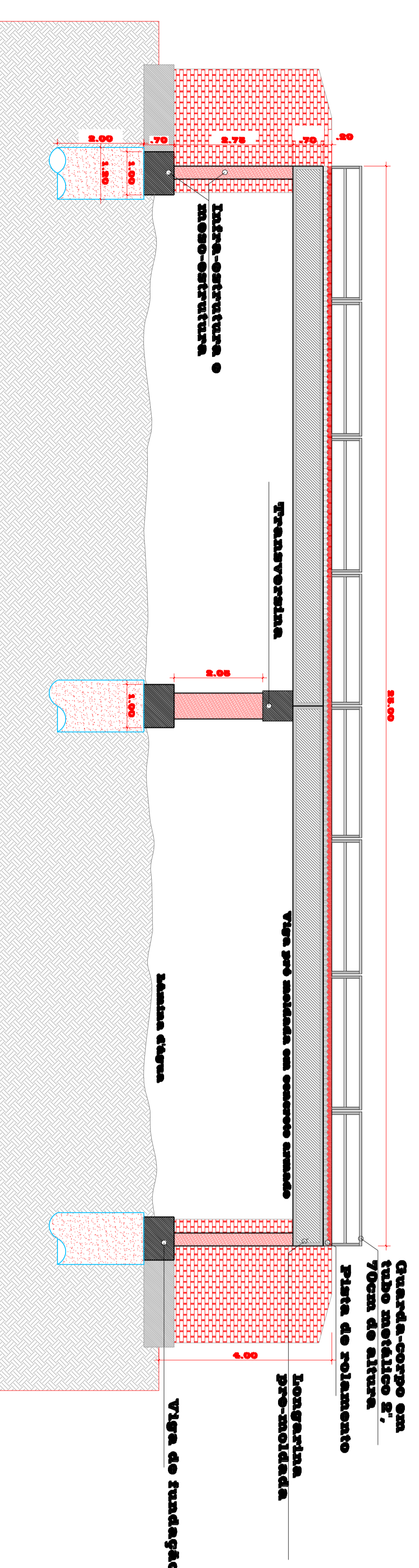
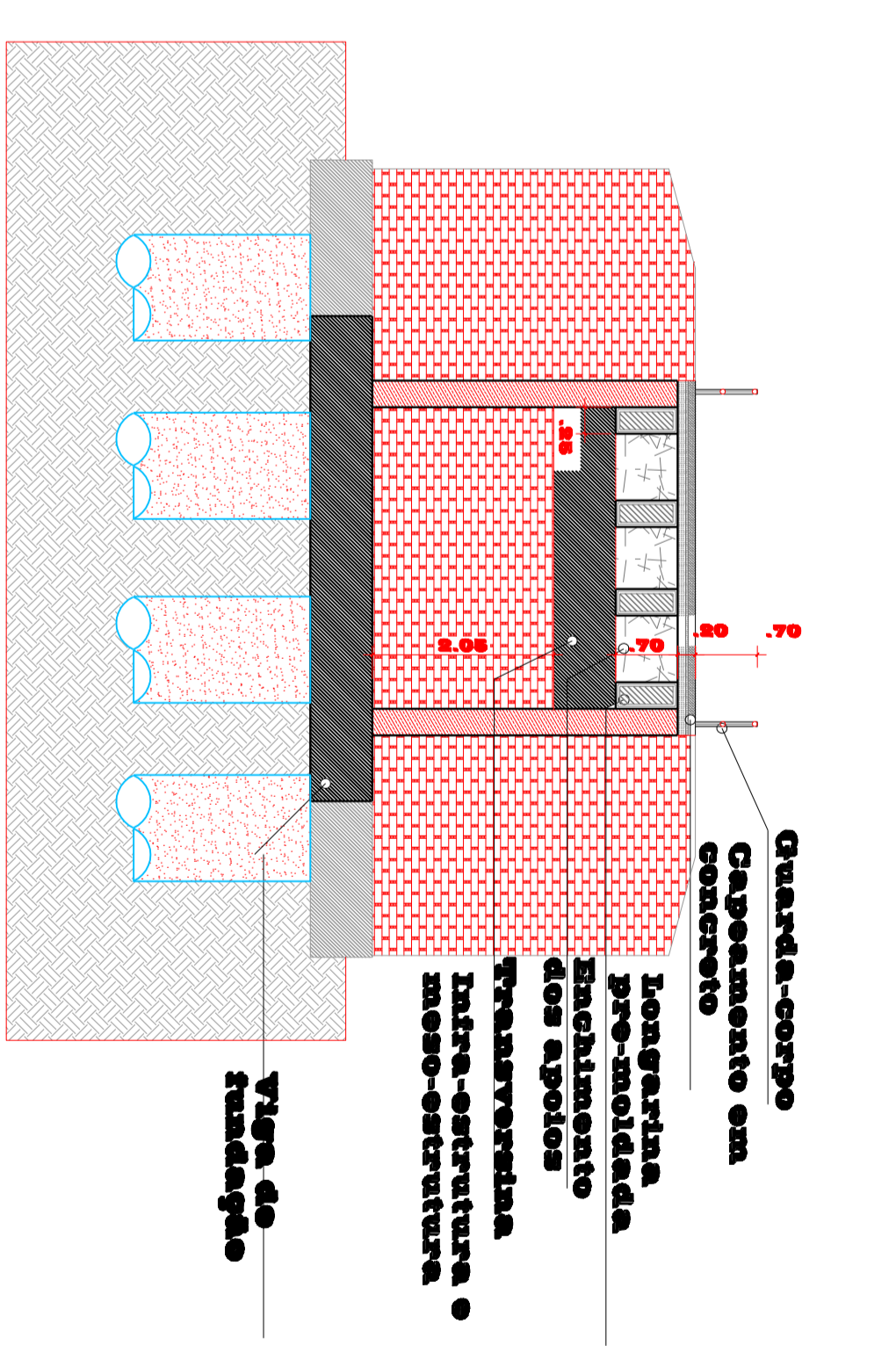
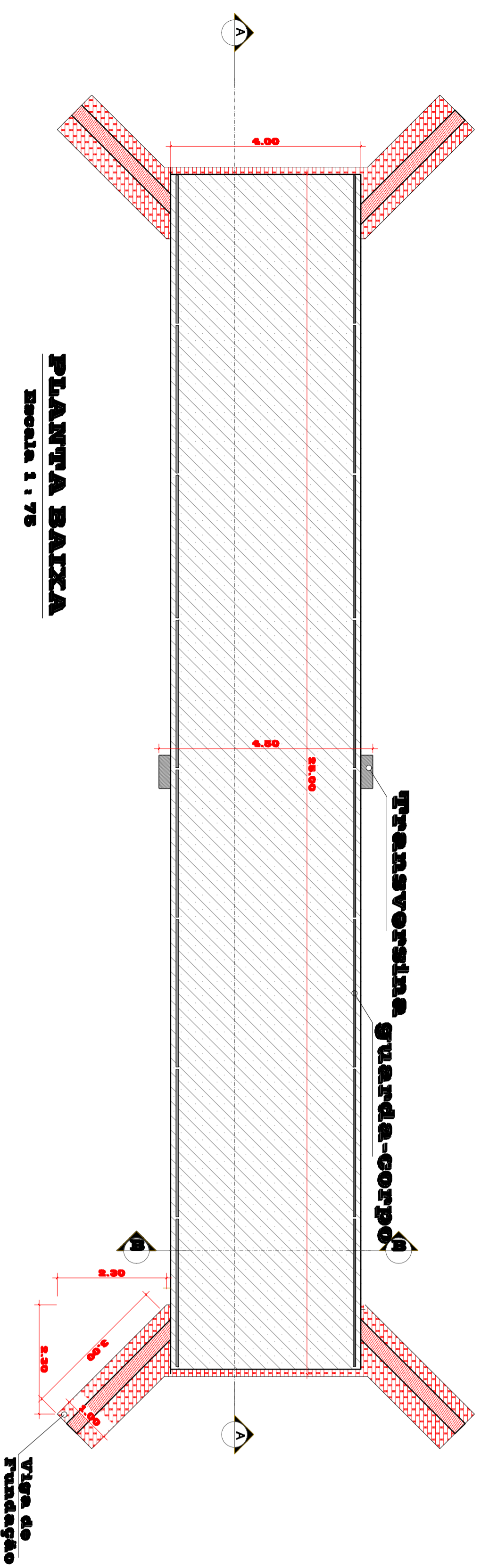
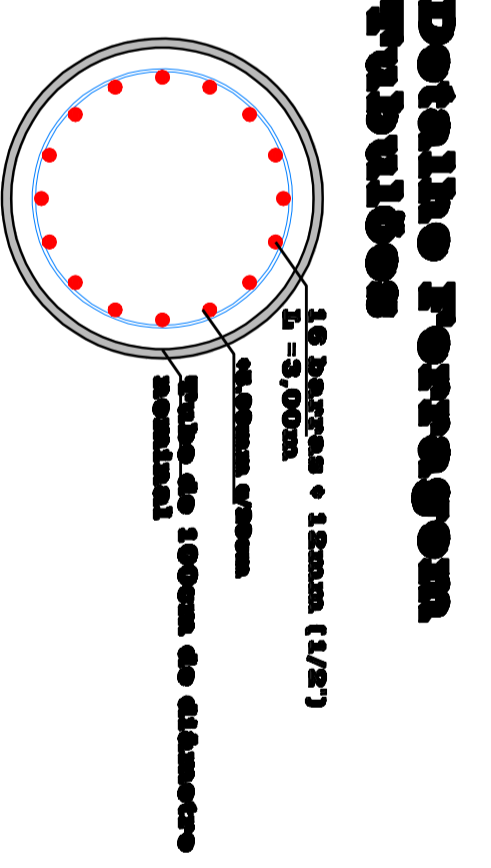
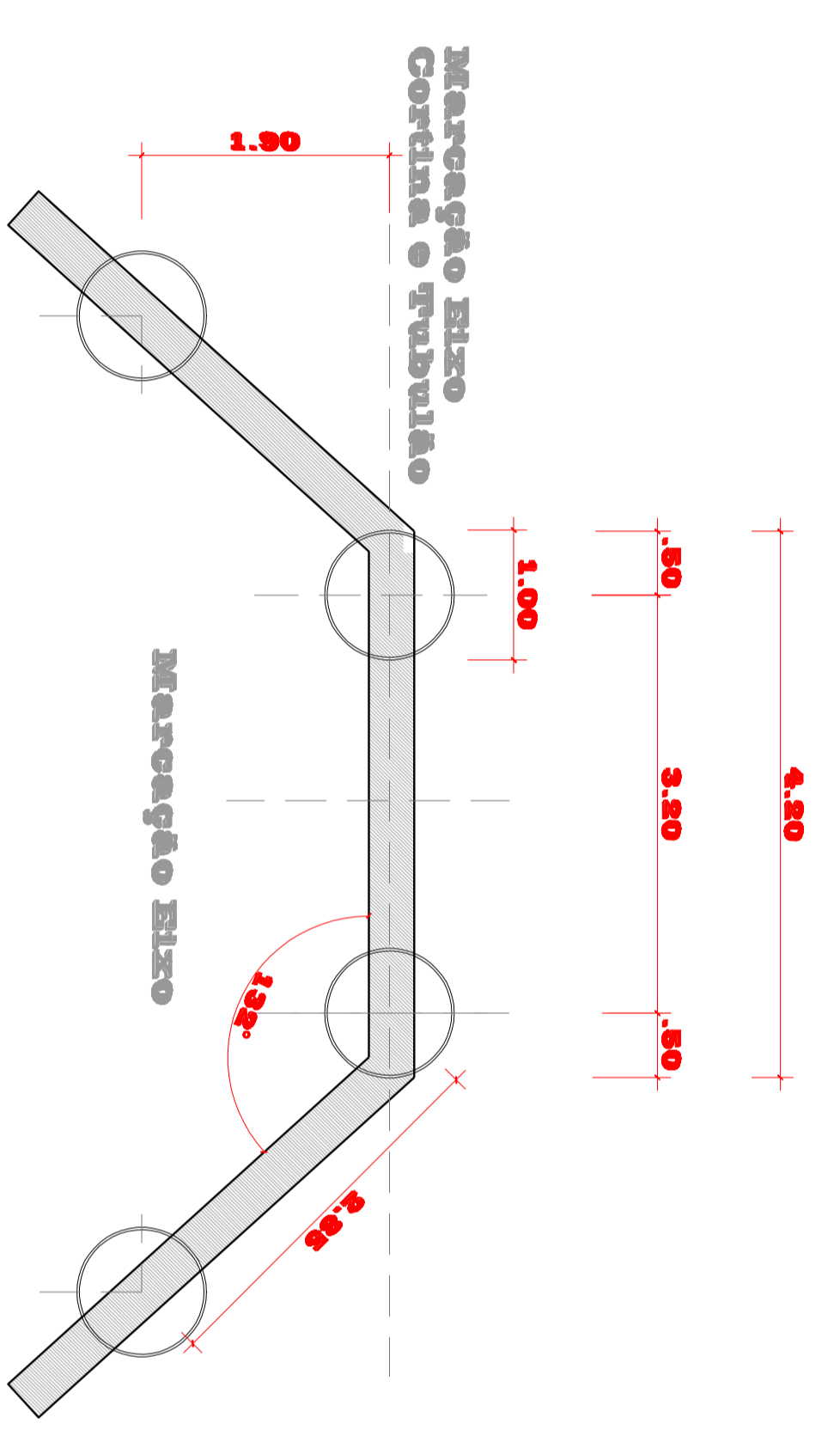
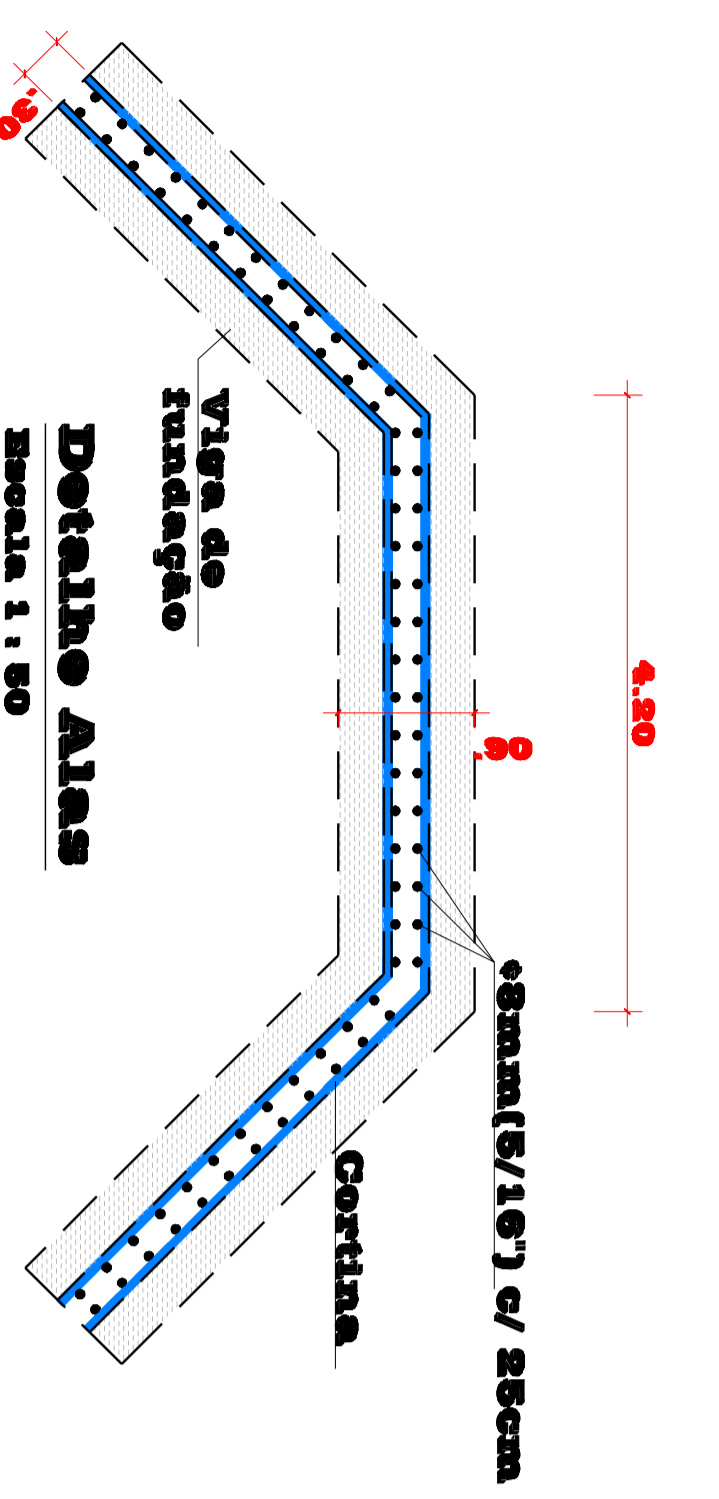


Ponte Passo dos Cavalhos

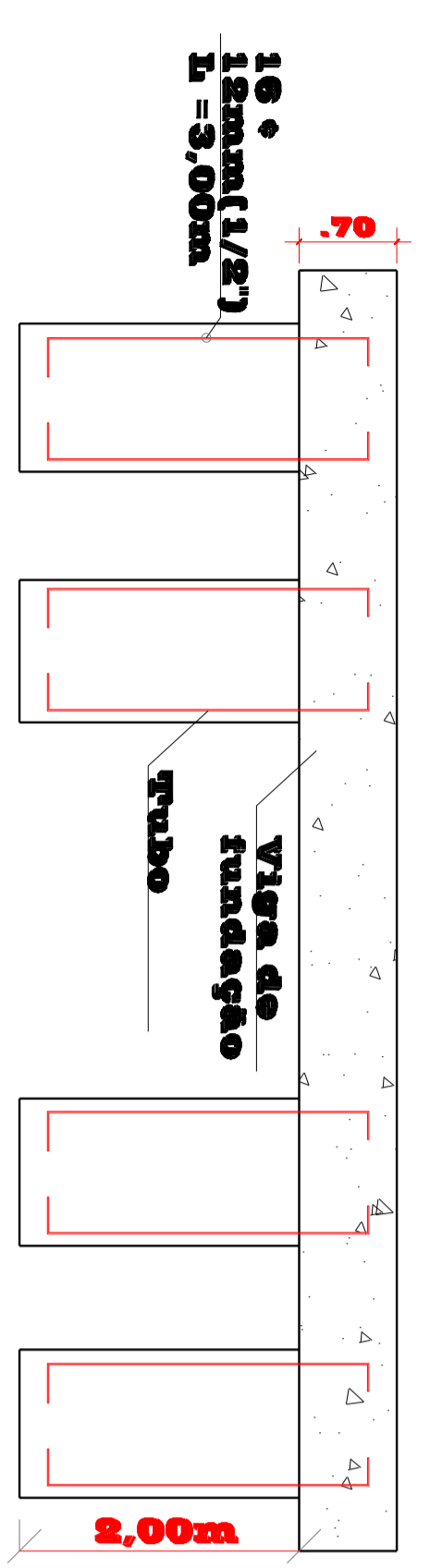


CORTE BB
Escala 1 : 75

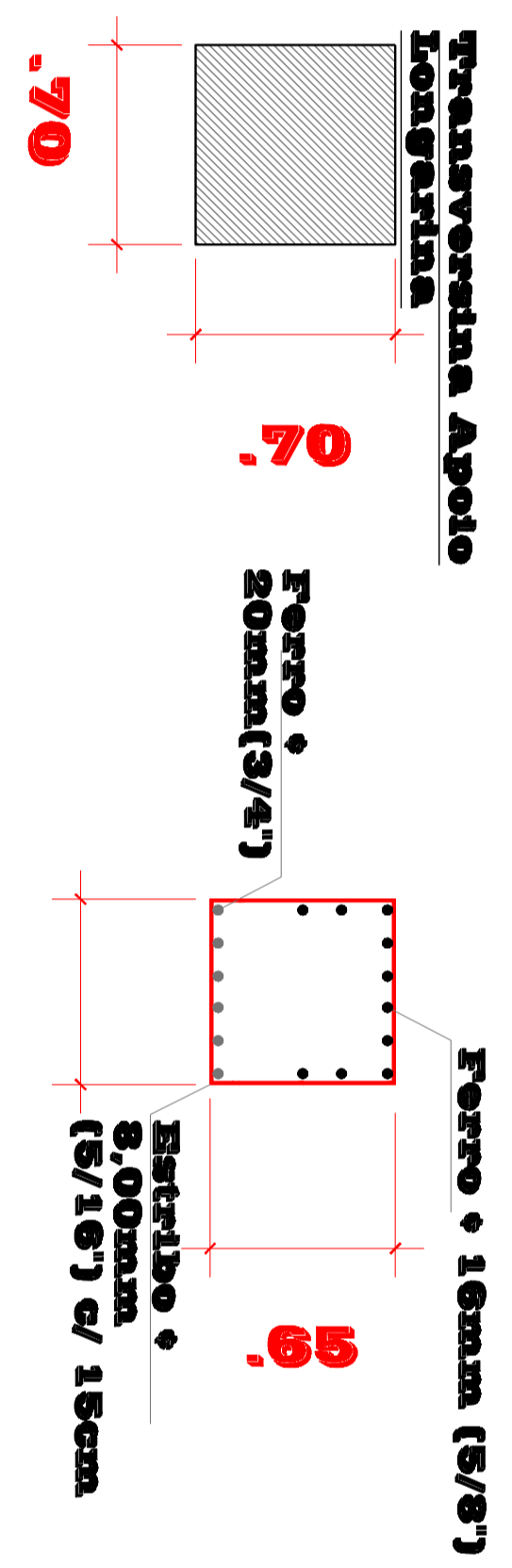
CORTE AA
Escala 1 : 75



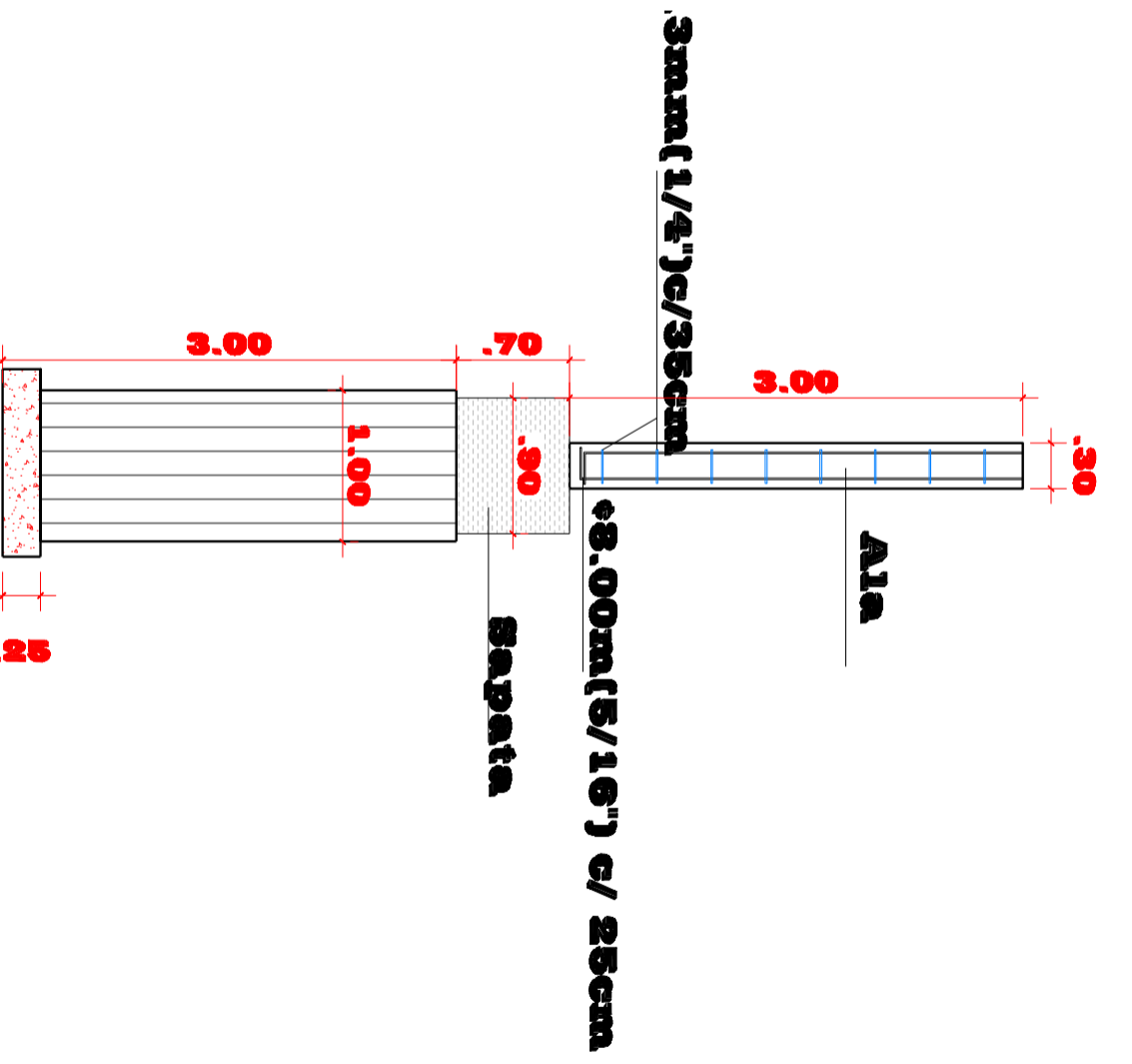
Vista Superior
Escala 1 : 25



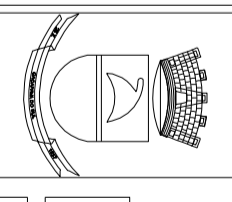
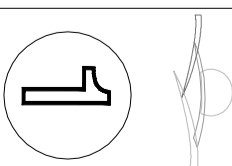
Vista
Escala 1 : 50



Corte Transversina
Escala 1 : 25



Detalhe Fundações
Escala 1 : 50

		<p>PREFEITURA MUNICIPAL DE CAÇAPAVA DO SUL PROGRAMA RESPOSTA AOS DESASTRES MINISTÉRIO DA INTEGRAÇÃO NACIONAL PONTE EM CONCRETO ARMADO</p>		
<p>LOCAL: PALMIRA BAIXA -CORREIA AA e BB PARQUE DOS CARVALHOS- CAÇAPAVA DO SUL / SP</p>	<p>DATA: MARÇO 2010</p>	<p>PROJETO: CLAUDIO GOELLNER ENGENHEIRO CIVIL CRB/185.3800-0</p>	<p>1</p>	