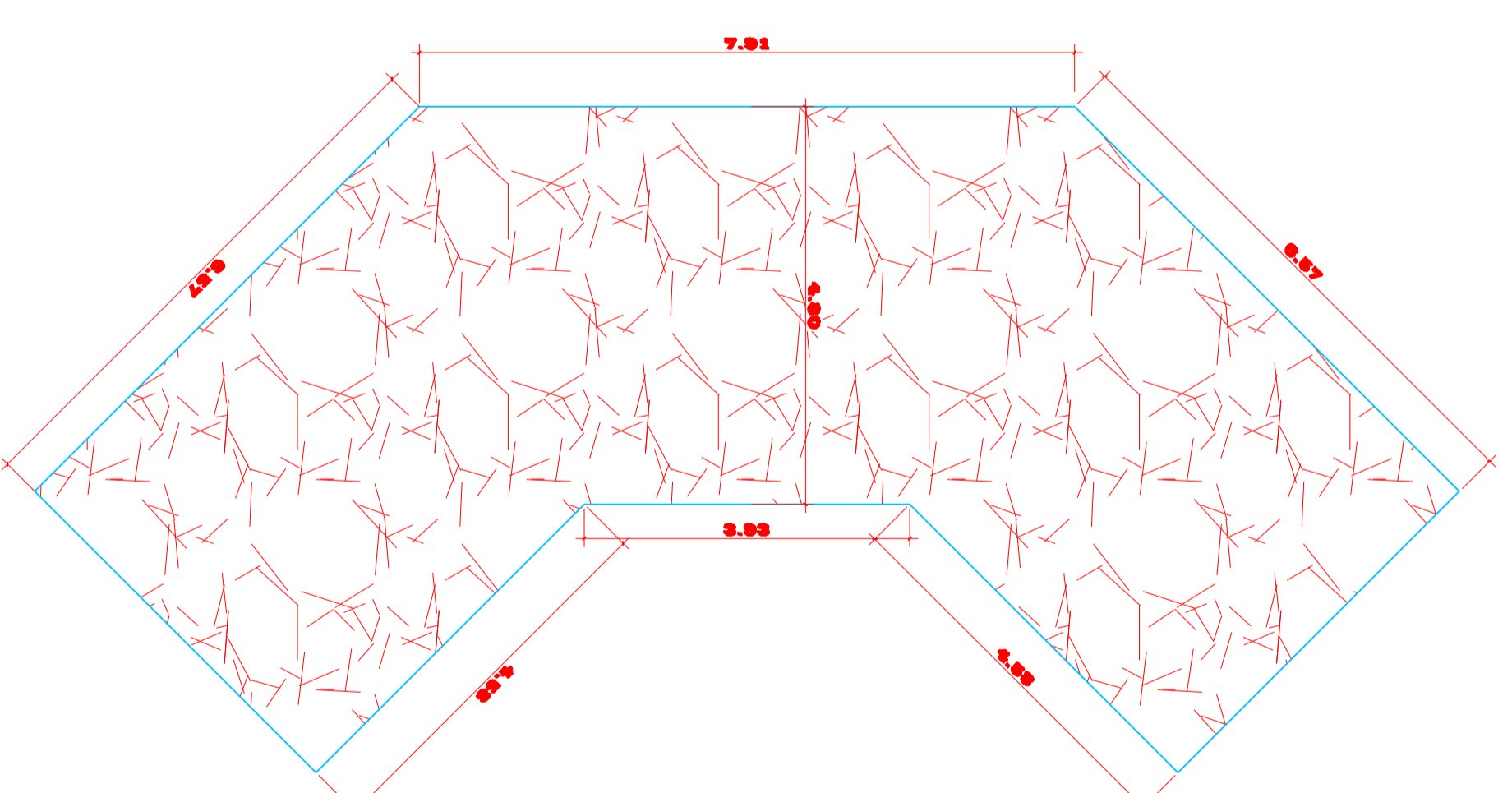
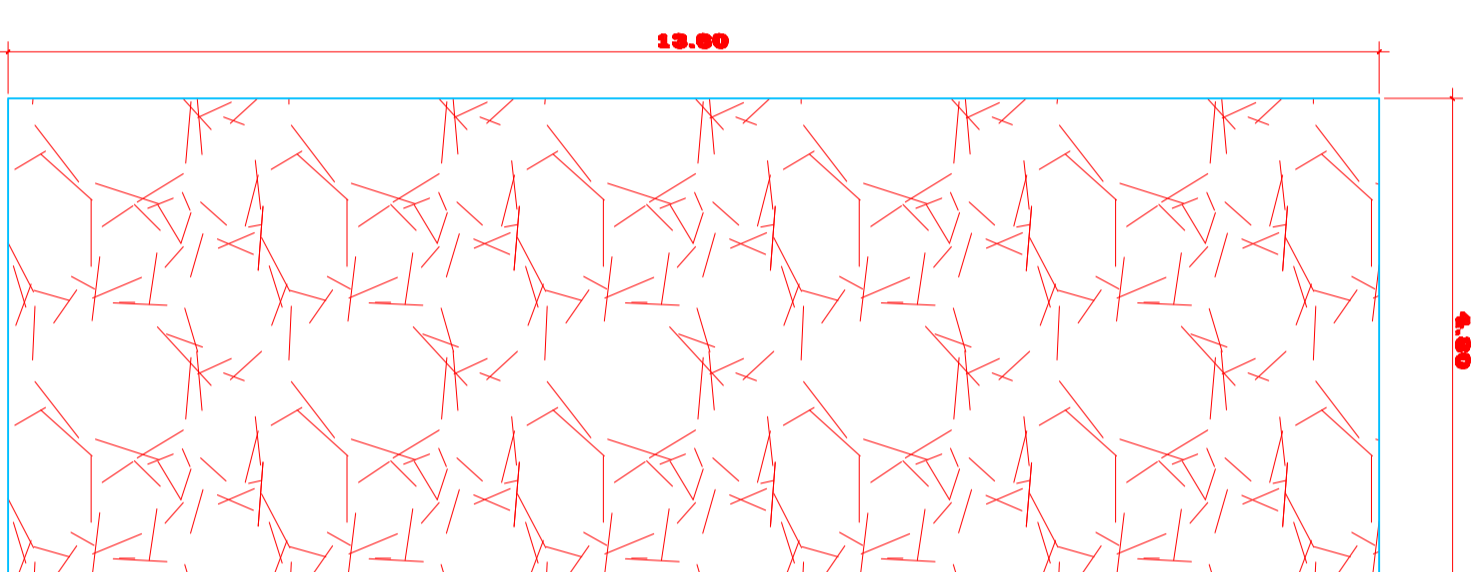
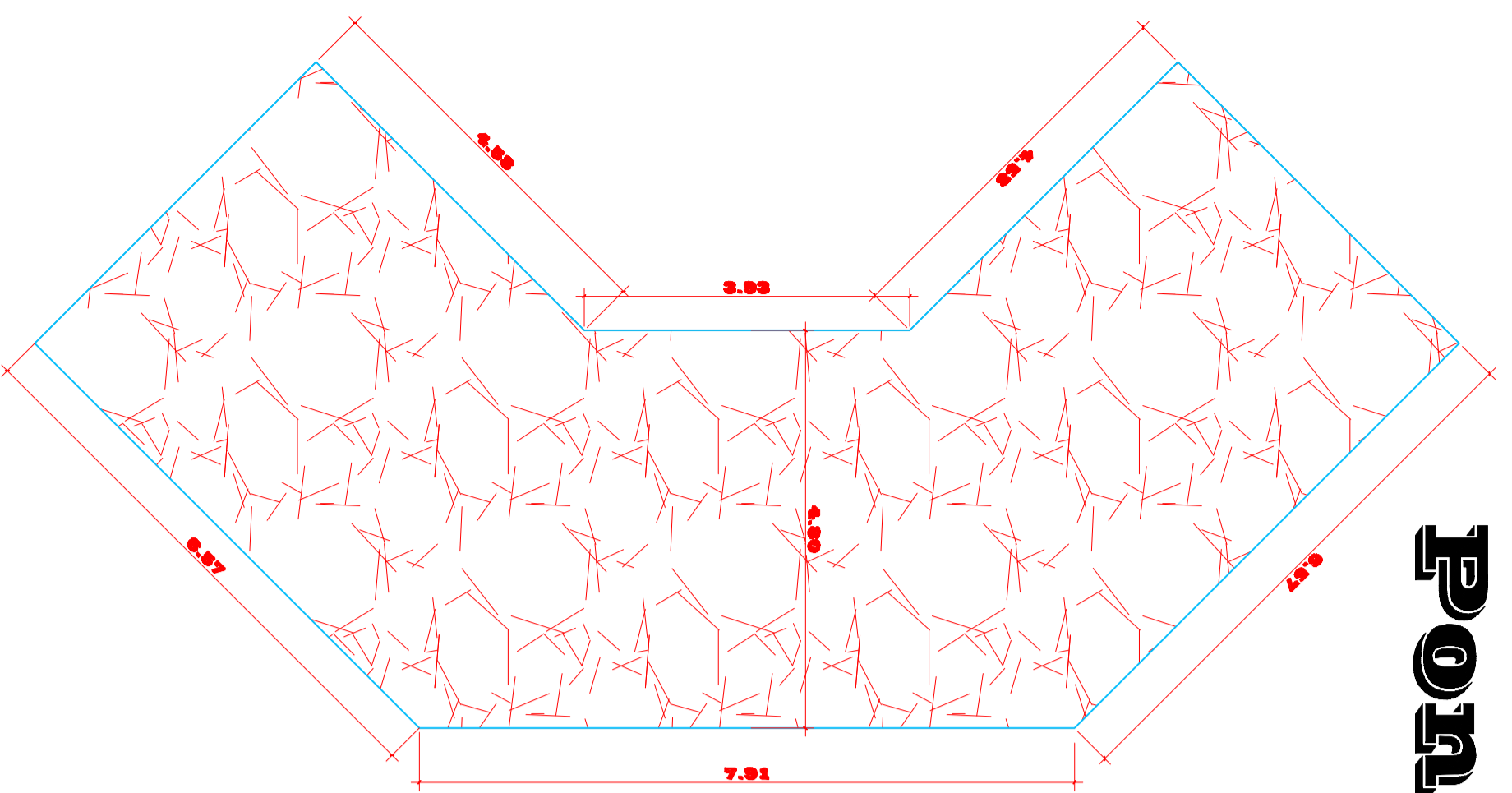
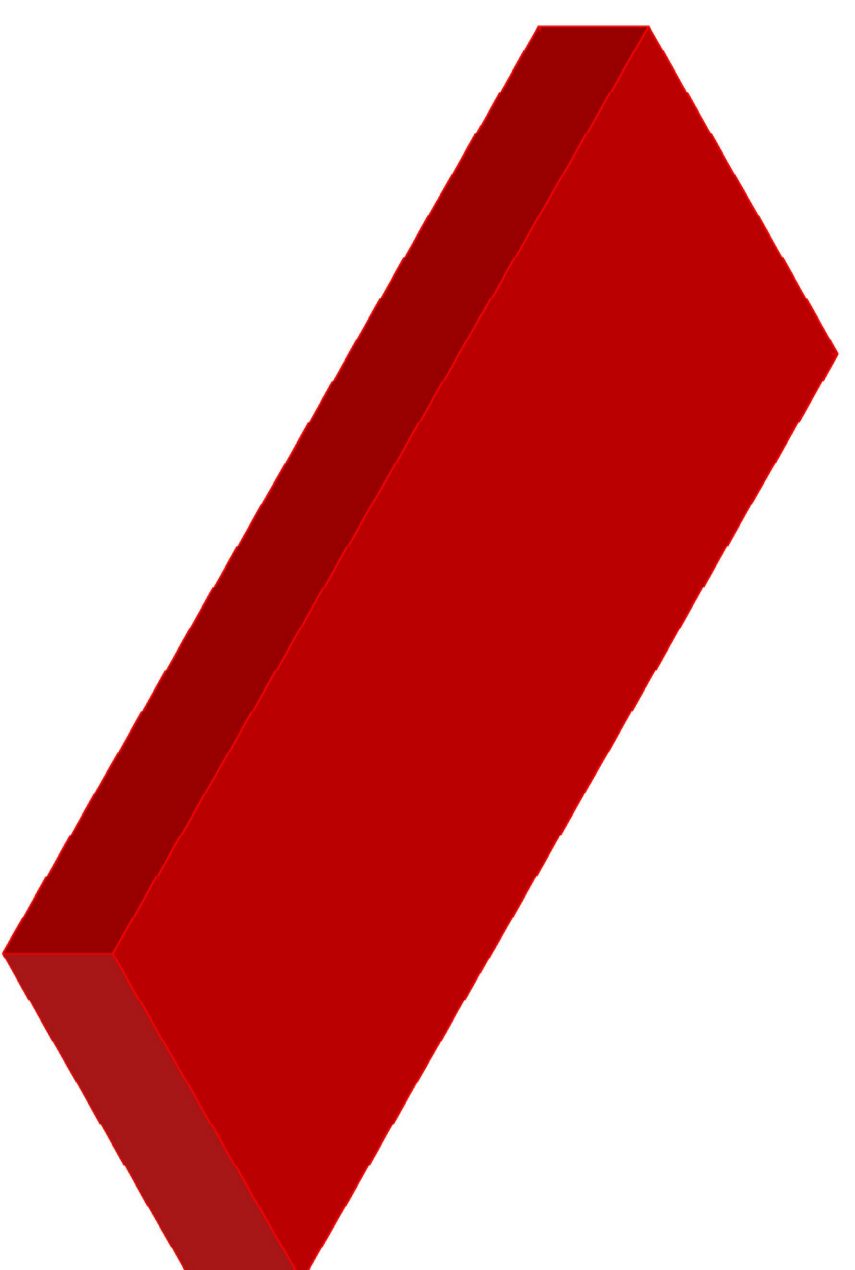


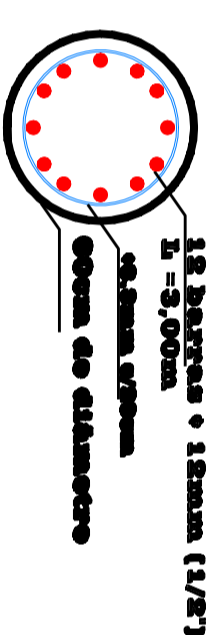
# Ponte Passo dos Carvalhos



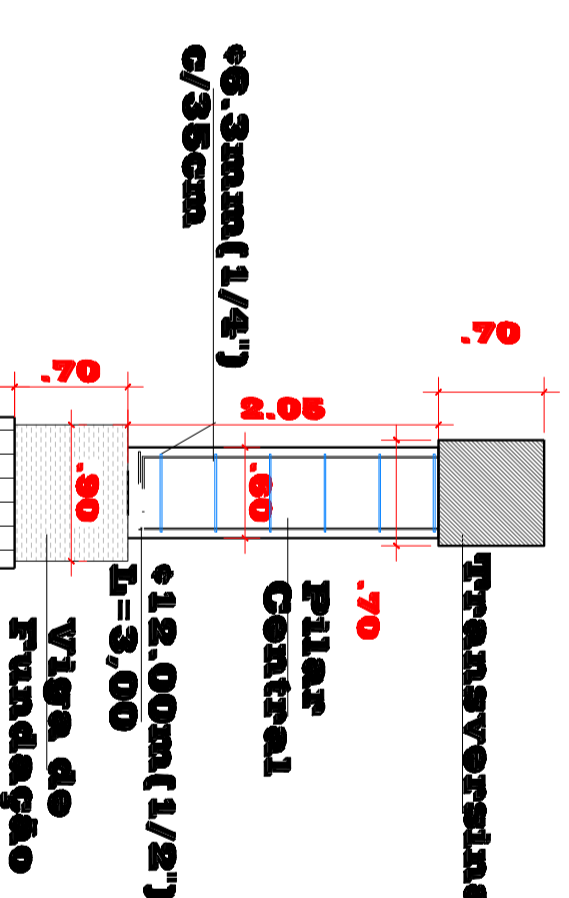
## Ensace de Pilares - Isométrico



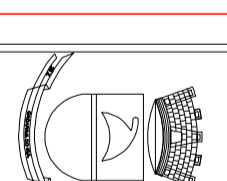
### Detalhe Ferragem Pilar Central



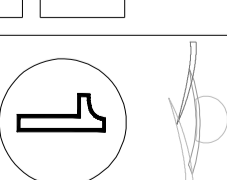
Detalhe Ferragem  
Pilar Central  
Escala 1 : 25



Detalhe Pilar Central  
Escala 1 : 50



PREFEITURA MUNICIPAL DE CAÇAPAVA DO SUL  
PROGRAMA RESPOSTA AOS DESASTRES  
MINISTÉRIO DA INTEGRAÇÃO NACIONAL  
PONTE EM CONCRETO ARMADO



LOCAL: PÁVIA BAIXA - CORREIA AA 9 28  
DATA: MARÇO 2010  
PROJETO: ZAIRIB TITANAU FERREIRA DE CASTRO  
PROJETO: CLAUDIO GOELLNER  
ENGENHEIRO CIVIL  
CRB/RES 38900-0