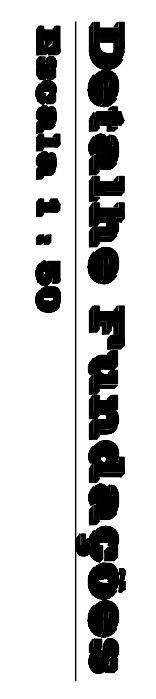
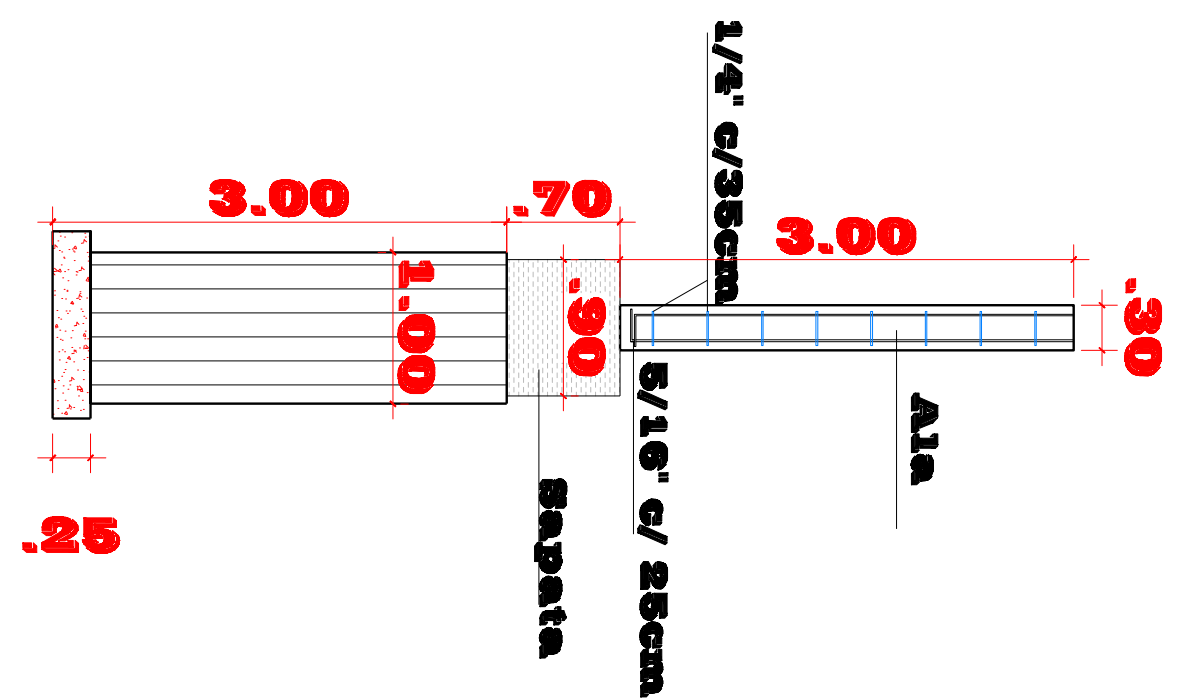
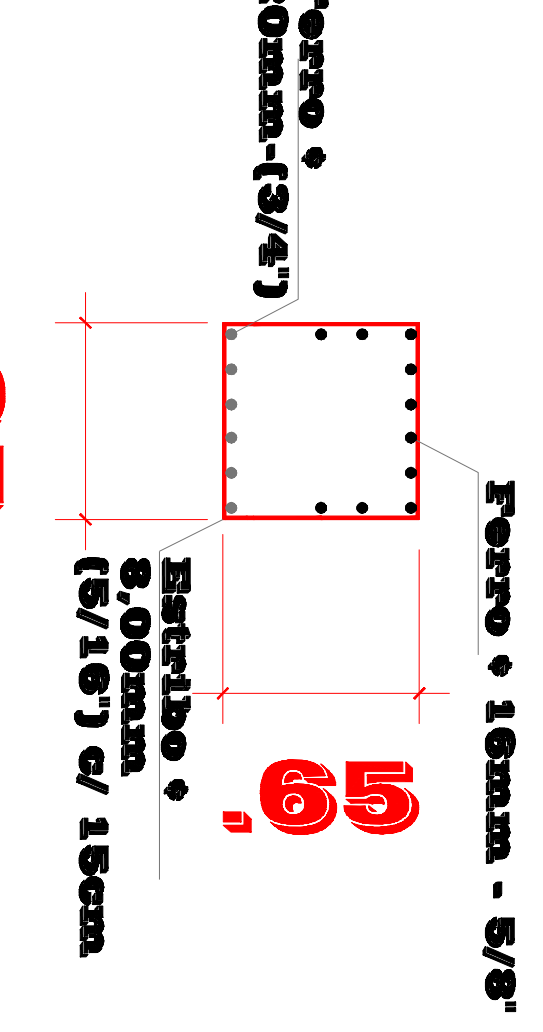
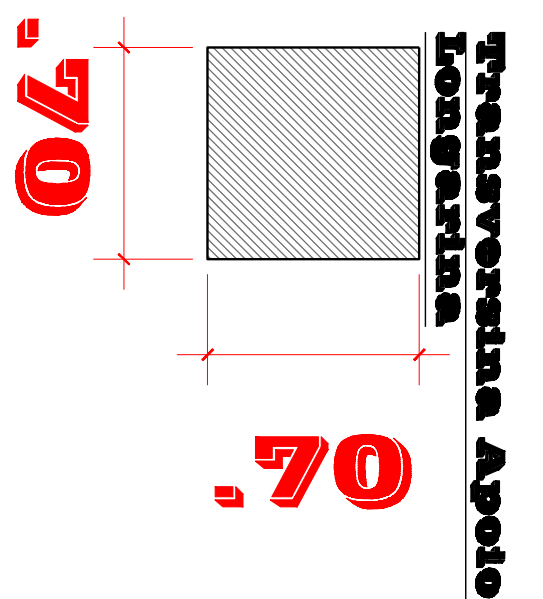
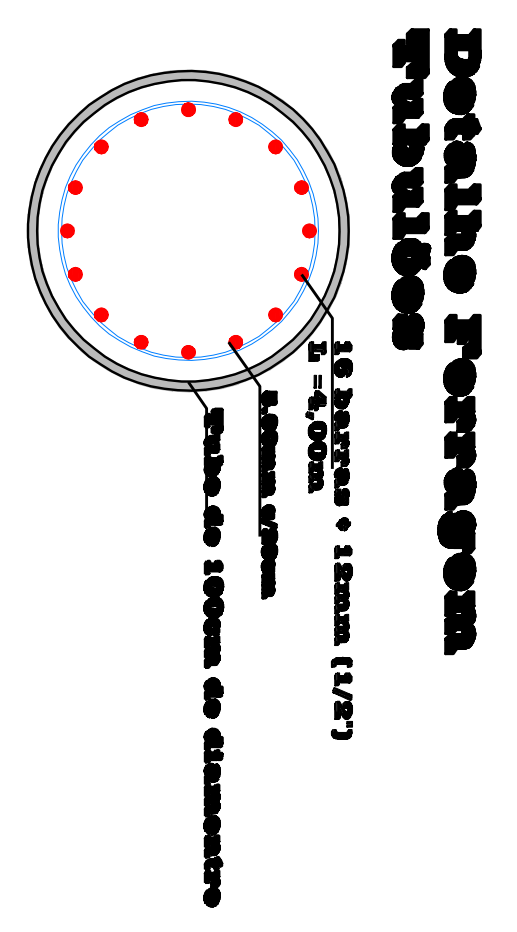
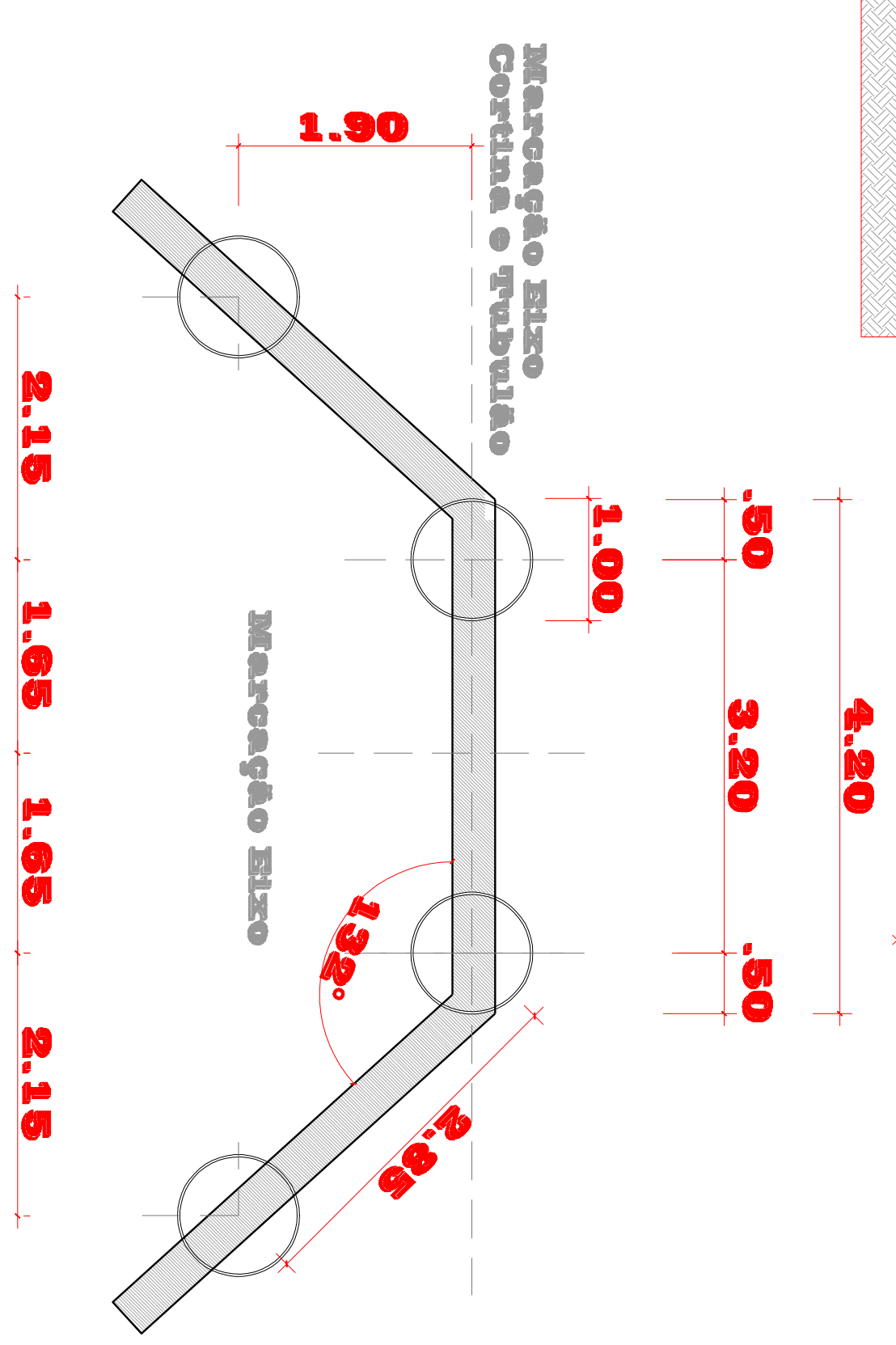
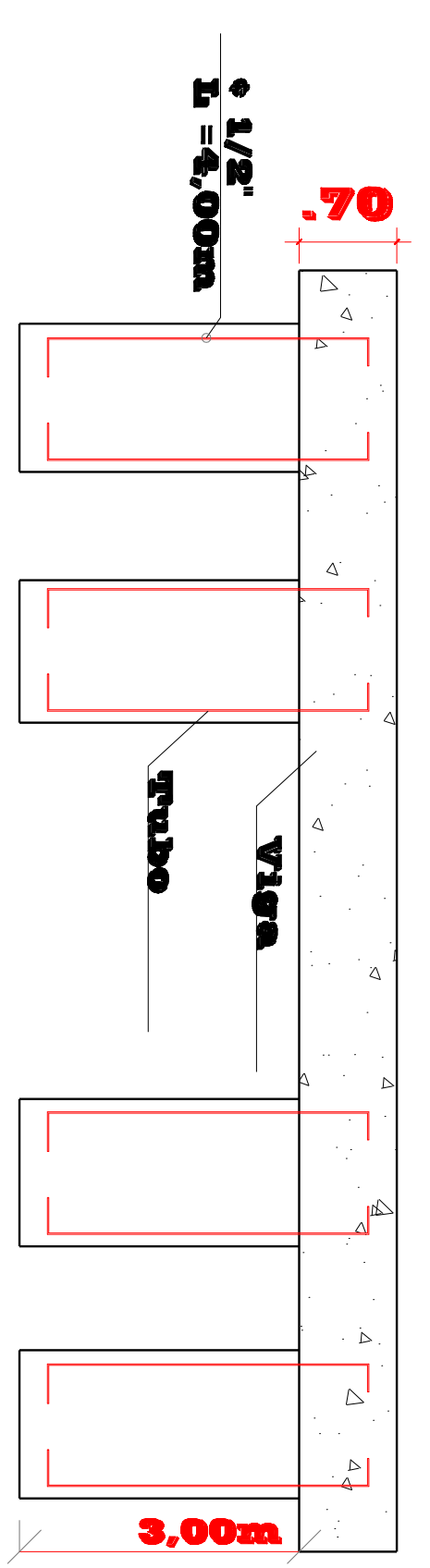
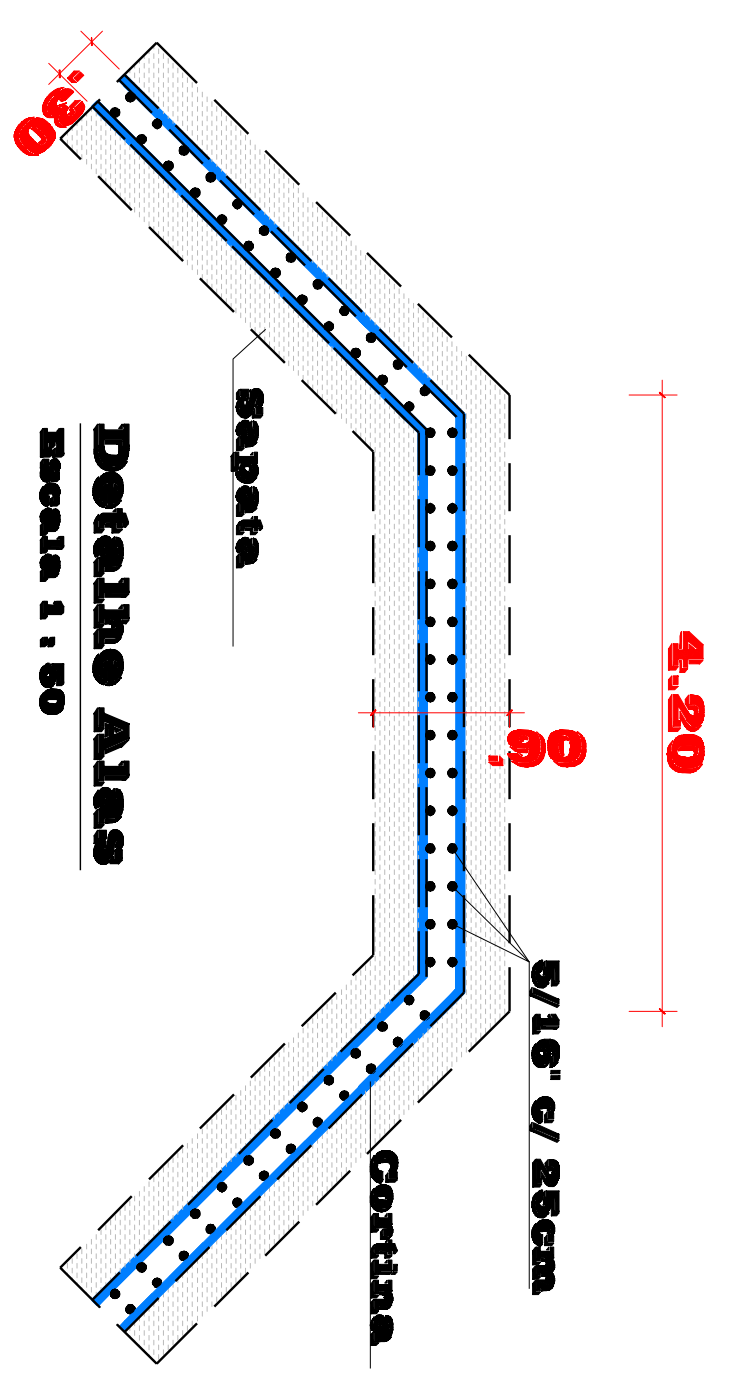
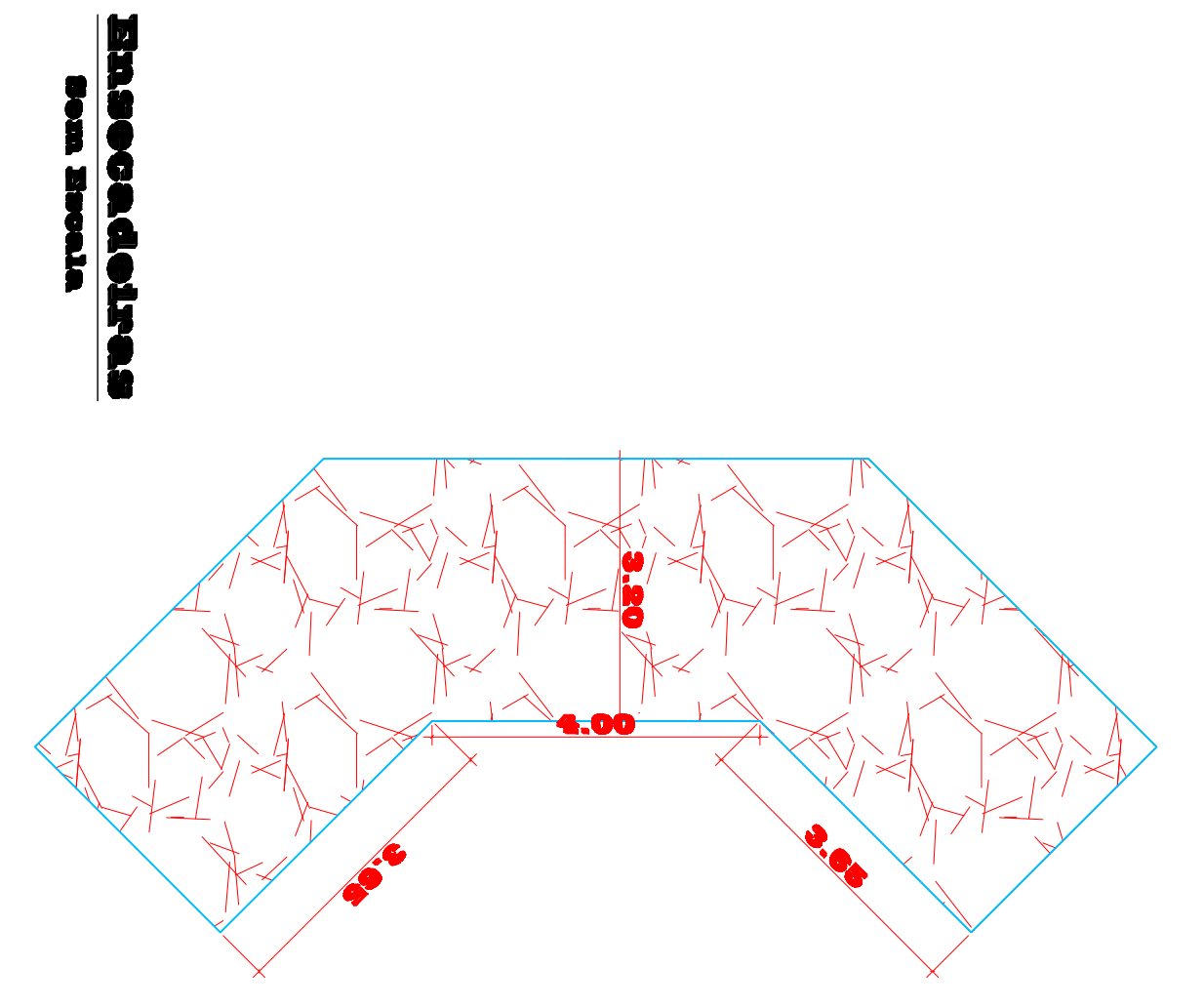
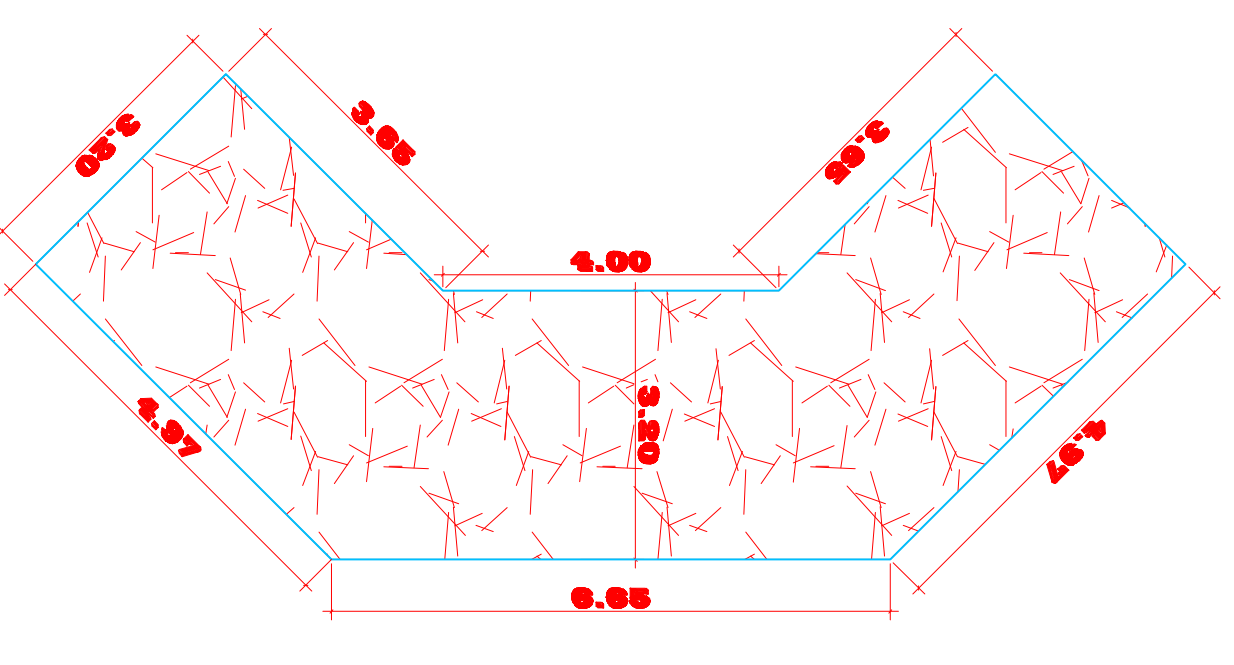
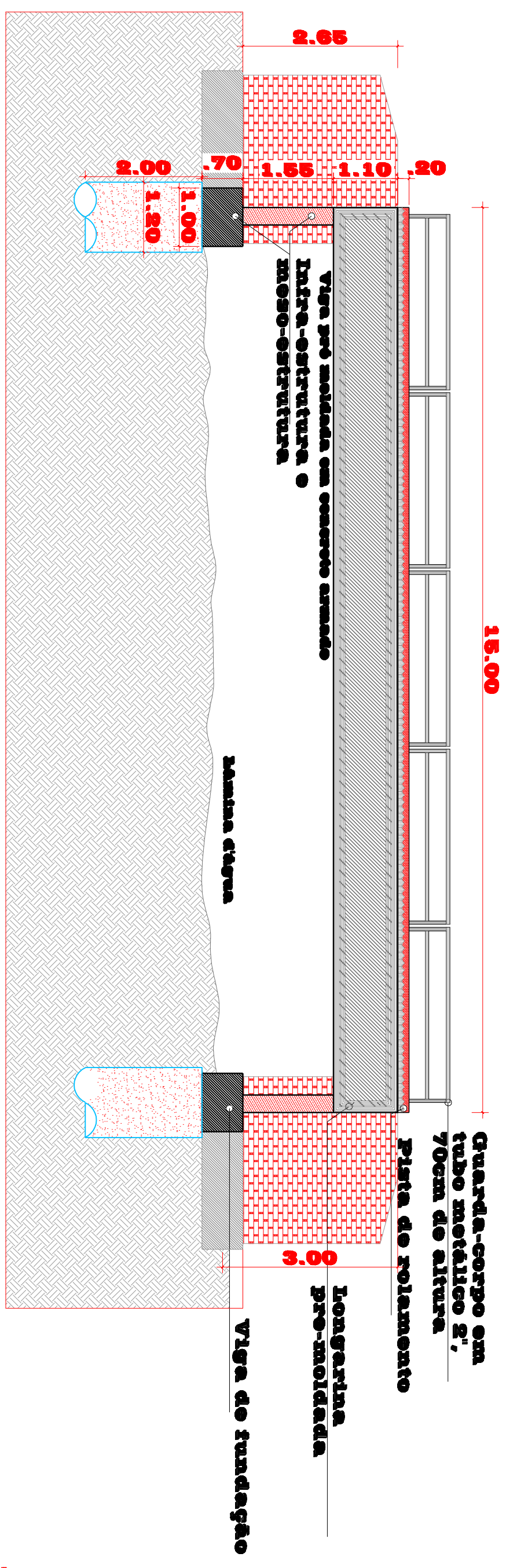
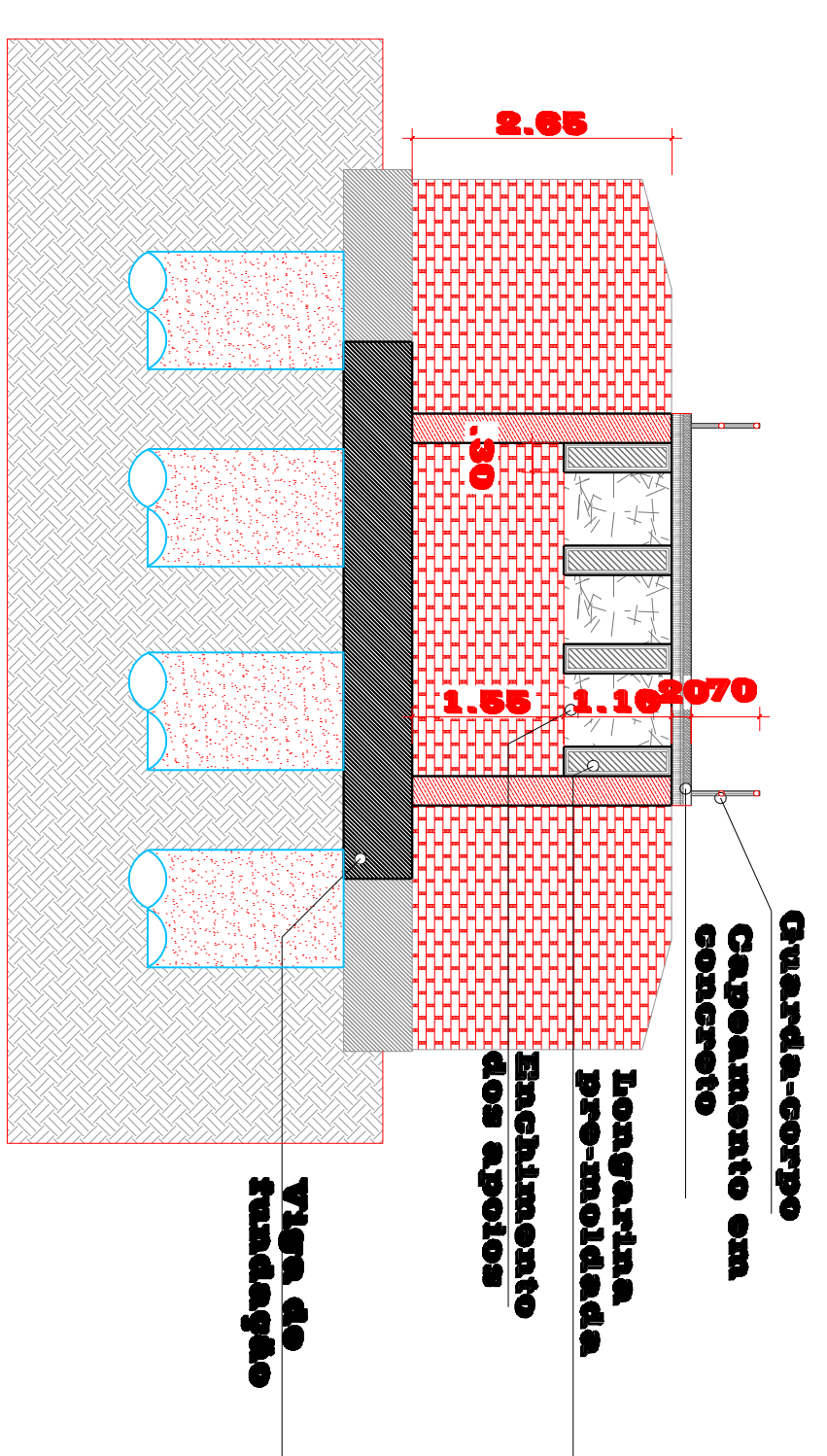
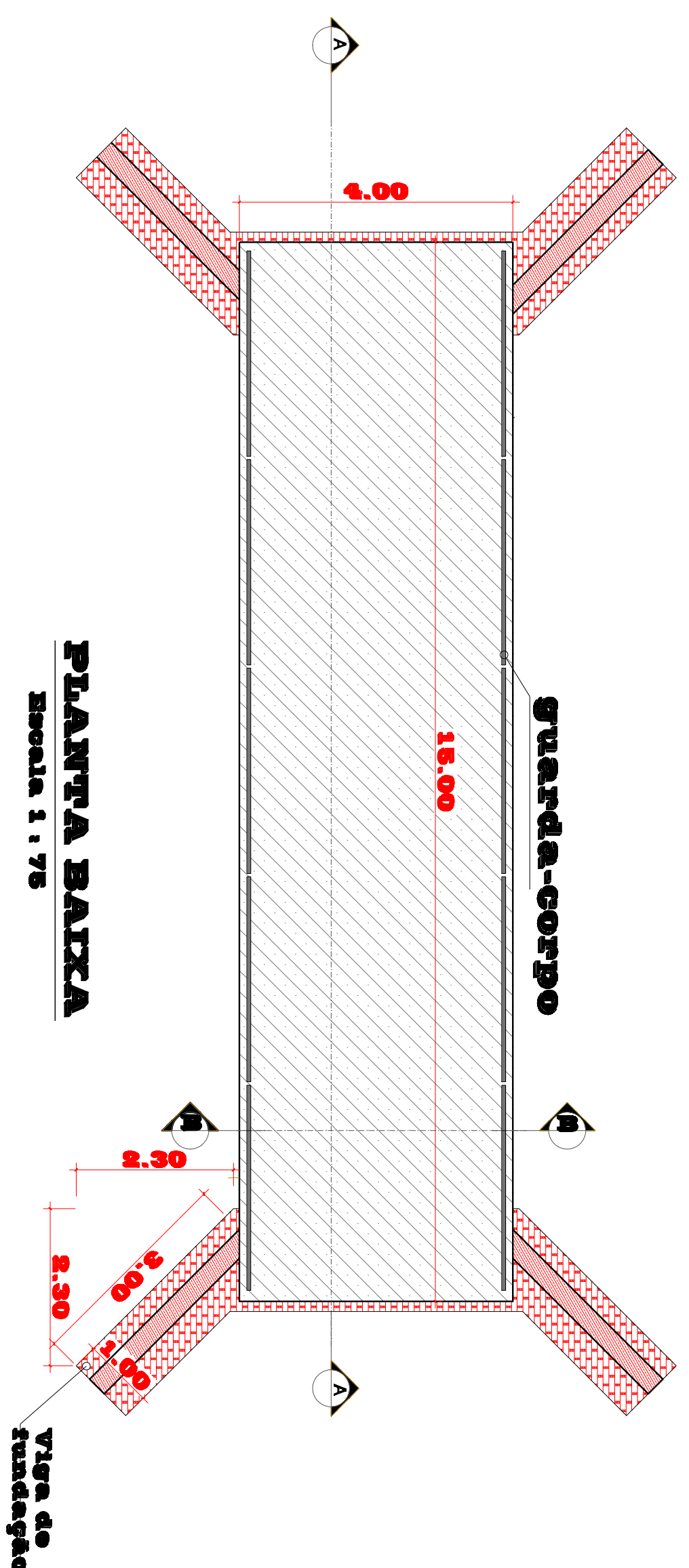
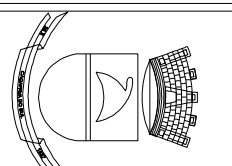


Ponte Passo do Picó



	
<p>PREFEITURA MUNICIPAL DE CAÇAPAVA DO SUL</p> <p>PROGRAMA RESPOSTA AOS DESASTRES</p> <p>MINISTÉRIO DA INTEGRAÇÃO NACIONAL</p> <p>PONTE EM CONCRETO ARMADO</p>	
<p>LOCAL: PÁRAMA BAIXA -CORTE A/A e B/B</p> <p>ZONA DO PROJ. - CAÇAPAVA DO SUL / SP</p>	<p>PROJETO: CLAUDIO GOELLNER</p> <p>DATA: Maio 2010</p> <p>CLIENTE: ZAIRI TIBALDI RESERVA DE CASTRO</p>